

INSTRUCTIONS FOR UNIVERSAL ADJUSTABLE TANK LEVER

Determine Handle Position and Handle Type based on Table 1 below. Click the corresponding Handle Position/Type to proceed to the appropriate instructions for your handle position and type.

Before you begin

FOR QUICK & EASY
**3D ASSEMBLY
INSTRUCTIONS**

Download the FREE App

BILT.



Para ver las instrucciones para ensamblaje 3D fáciles y rápidas. Descarga el app GRATIS.

HANDLE TYPE		
HANDLE POSITION	Plastic Handles (12044, 12046, 12052, 12063, 12064)	Metal Handles (12059, 12060, 12061, 12062)
	Left Front (pg.2)	Left Front (pg.10)
	Left Angled (pg.3)	Left Angled (pg.11)
	Left Side (pg.4)	Left Side (pg.12)
	Left Side Vertical (pg.5)	Left Side Vertical (pg.13)
	Right Front (pg.6)	Right Front (pg.14)
	Right Angled (pg.7)	Right Angled (pg.15)
	Right Side (pg.8)	Right Side (pg.16)
	Right Side Vertical (pg.9)	Right Side Vertical (pg.17)

Examples of Handle Type:

Plastic -



Metal -



Examples of Handle Position:



Left Front



Side



Side Vertical

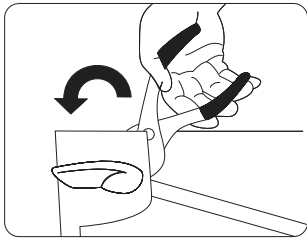


Right Front

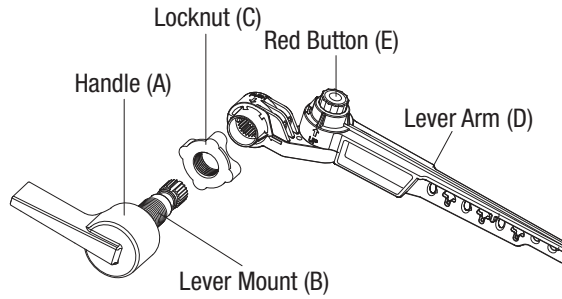


Angled

LEFT FRONT (PLASTIC HANDLE)



1. Remove existing handle and arm. Loosen locknut and pull entire arm out through tank hole.



*Image shows Straight Lever Handle Style

2. REFER TO TABLE 1 ON PAGE 1 TO DETERMINE IF YOUR REPLACEMENT INVOLVES A LEFT FRONT, RIGHT FRONT, SIDE, OR ANGLED HANDLE PLACEMENT.

FOR LEFT FRONT TOILETS:

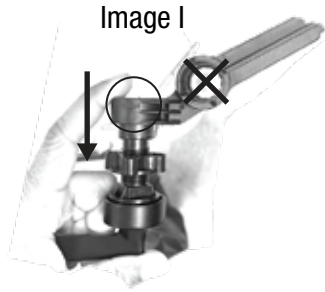


Image I

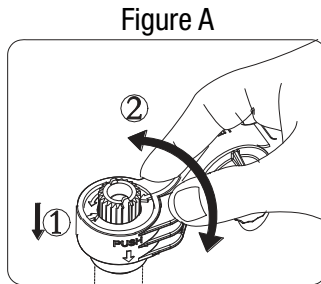


Figure A

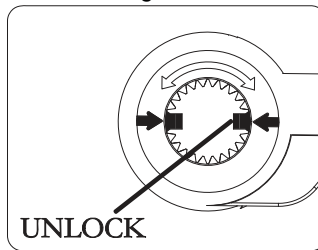


Figure B

UNLOCK

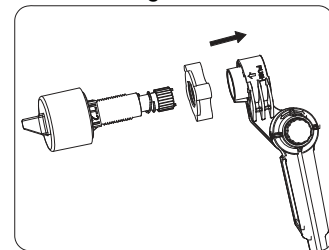


Figure C

3. Remove arm from packaging. Refer to Image I for how to hold the handle. **Do not push red button marked X** in Image I at this time. With handle (A) facing towards you, push lever arm (D) in all the way as shown (Figure A, Arrow 1) and twist lever arm (D) 90° degrees as shown (Figure A, Arrow 2) to align arrows on the back end of the lever arm with guides as shown in (Figure B) and thus separating lever from handle mechanism (Figure C). Unscrew locknut (C) from handle mechanism (left-hand thread).

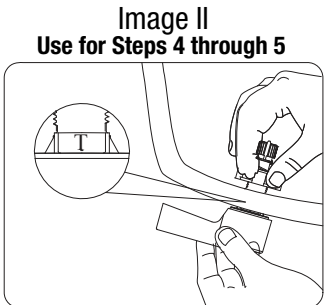


Image II

Use for Steps 4 through 5

Use Image II for steps 4 through 5

4. Insert lever mount (B) through tank hole to position the handle into the tank facing left.
5. Reattach locknut (C) back onto lever mount (B) clockwise finger tight, ensuring locknut is facing flat side toward handle.

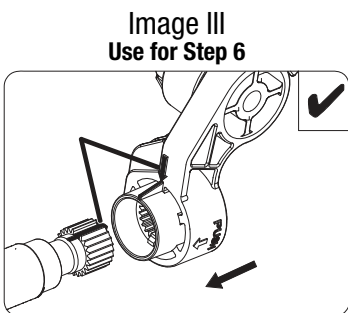


Image III
Use for Step 6

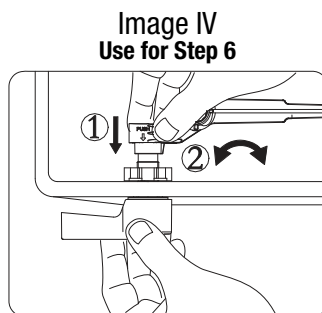


Image IV
Use for Step 6

Use Image III and Image IV for step 6

6. Position lever arm (D) perpendicular (90° Degrees) to handle and slide back onto lever mount (B) using arrows to align with notches; then twist to lock in place.

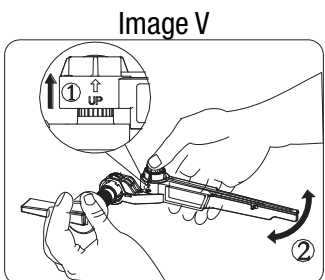


Image V

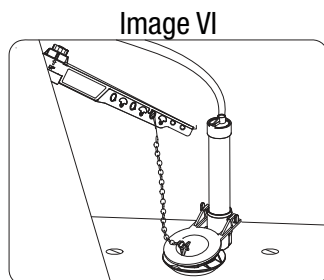


Image VI

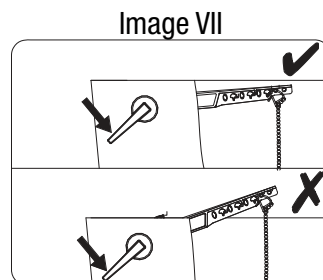
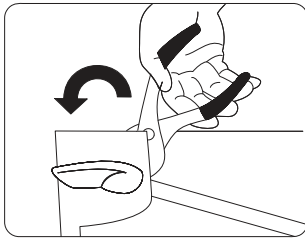


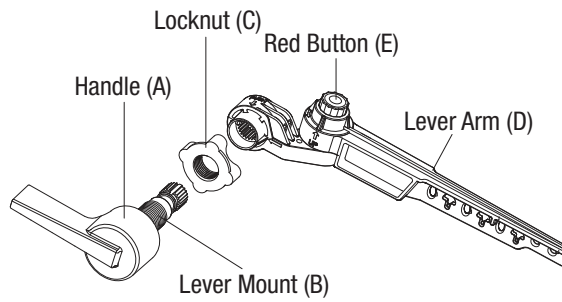
Image VII

7. For angle adjustment (Image V) inside toilet, push down on red button (E) and lift lever arm (D) to adjust angle left or right and align placement prior to connecting flapper chain.
8. For lever arm (D) height adjustment inside toilet (Image VI), push in toward lever mount (B) and rotate up or down.
9. Attach chain (Images VI and VII). Chain needs 1/2" slack with flapper closed. Arm cannot hit tank cover.

LEFT ANGLED (PLASTIC HANDLE)



1. Remove existing handle and arm. Loosen locknut and pull entire arm out through tank hole.



*Image shows Straight Lever Handle Style

2. REFER TO TABLE 1 ON PAGE 1 TO DETERMINE IF YOUR REPLACEMENT INVOLVES A LEFT FRONT, RIGHT FRONT, SIDE, OR ANGLED HANDLE PLACEMENT.

FOR LEFT ANGLED TOILETS:

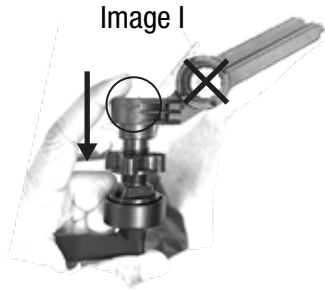


Image I

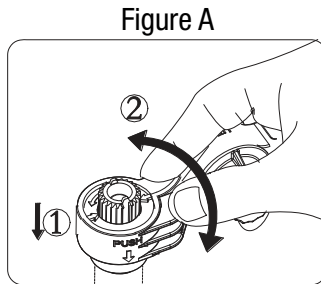


Figure A

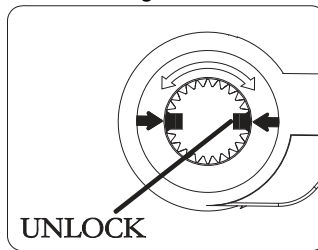


Figure B

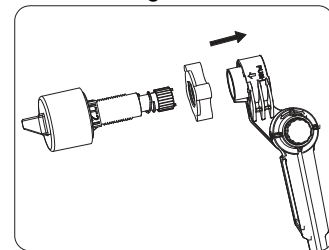


Figure C

3. Remove arm from packaging. Refer to Image I for how to hold the handle. **Do not push red button marked X** in Image I at this time. With handle (A) facing towards you, push lever arm (D) in all the way as shown (Figure A, Arrow 1) and twist lever arm (D) 90° degrees as shown (Figure A, Arrow 2) to align arrows on the back end of the lever arm with guides as shown in (Figure B) and thus separating lever from handle mechanism (Figure C). Unscrew locknut (C) from handle mechanism (left-hand thread).

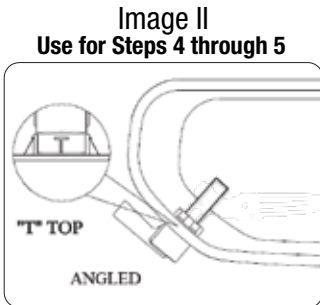


Image II

Use for Steps 4 through 5

Use Image II for steps 4 through 5

4. Insert lever mount (B) through tank hole to position the handle into the tank facing left.
5. Reattach locknut (C) back onto lever mount (B) clockwise finger tight, ensuring locknut is facing flat side toward handle.

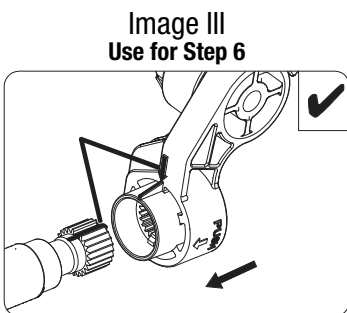


Image III
Use for Step 6

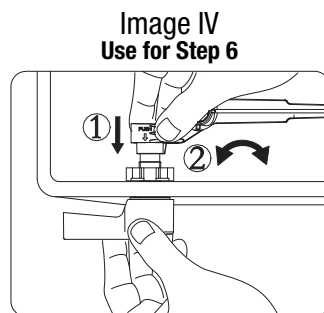


Image IV
Use for Step 6

Use Image III and Image IV for step 6

6. Position lever arm (D) perpendicular (90° Degrees) to handle and slide back onto lever mount (B) using arrows to align with notches; then twist to lock in place.

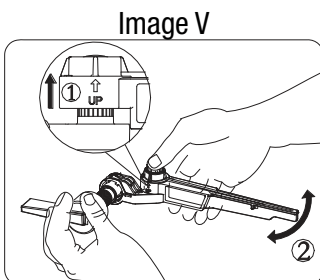


Image V

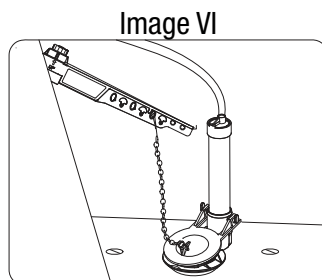


Image VI

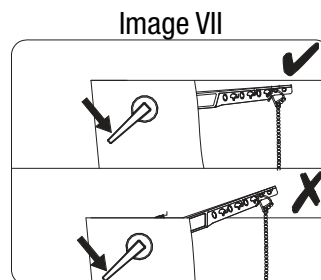
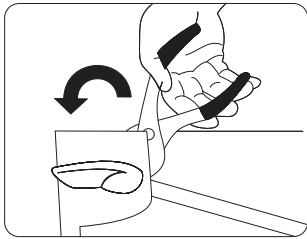


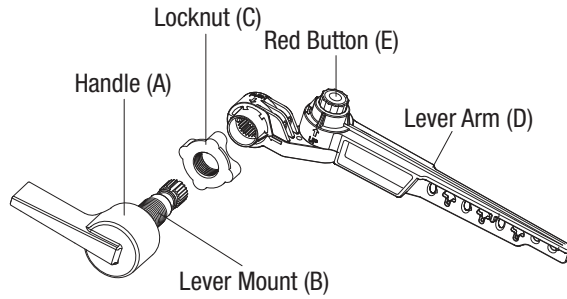
Image VII

7. For angle adjustment (Image V) inside toilet, push down on red button (E) and lift lever arm (D) to adjust angle left or right and align placement prior to connecting flapper chain.
8. For lever arm (D) height adjustment inside toilet (Image VI), push in toward lever mount (B) and rotate up or down.
9. Attach chain (Images VI and VII). Chain needs ½" slack with flapper closed. Arm cannot hit tank cover.

LEFT SIDE (PLASTIC HANDLE)



1. Remove existing handle and arm. Loosen locknut and pull entire arm out through tank hole.



*Image shows Straight Lever Handle Style

2. REFER TO TABLE 1 ON PAGE 1 TO DETERMINE IF YOUR REPLACEMENT INVOLVES A LEFT FRONT, RIGHT FRONT, SIDE, OR ANGLED HANDLE PLACEMENT.

FOR LEFT SIDE TOILETS:

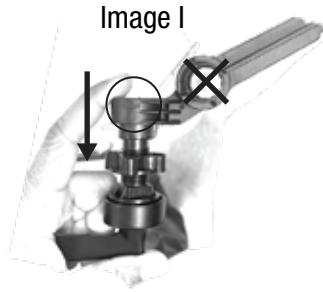


Image I

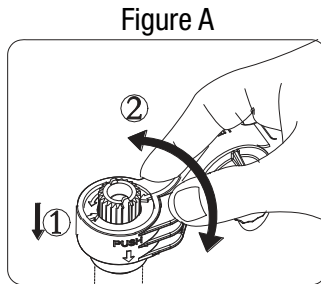


Figure A

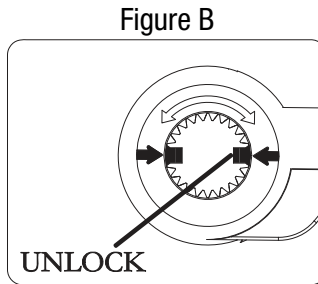


Figure B

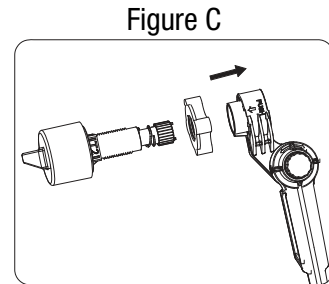


Figure C

3. Remove arm from packaging. Refer to Image I for how to hold the handle. **Do not push red button marked X** in Image I at this time.

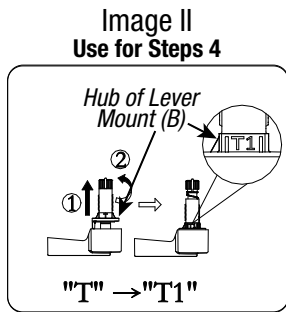


Image II
Use for Steps 4

- Use Image II for step 4
4. Hold the handle in one hand, grab the threaded hub portion of the Lever Mount (B) with the other hand and pull apart (1), compressing the spring at the end. Then rotate the threaded hub 90 degrees (2) until T1 faces up in the orientation it will be installed in the tank. Release the threaded hub, ensuring it seats fully back into the handle.



Image III
Use for Steps 5 through 6

- Use Image III for steps 5 through 6
5. Insert lever mount (B) through tank hole with the handle facing left while ensuring the T1 mark on the hub of the lever mount is facing up.
 6. Reattach locknut (C) back onto lever mount (B) clockwise finger tight, ensuring locknut is facing flat side toward handle.

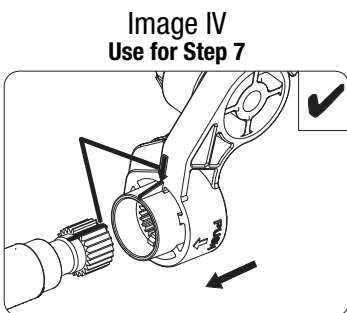


Image IV
Use for Step 7

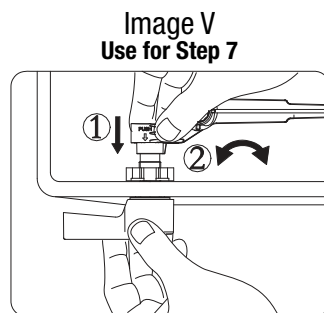


Image V
Use for Step 7

- Use Image IV and Image V for step 7
7. Position lever arm (D) perpendicular (90° Degrees) to handle and slide back onto lever mount (B) using arrows to align with notches; then twist to lock in place.

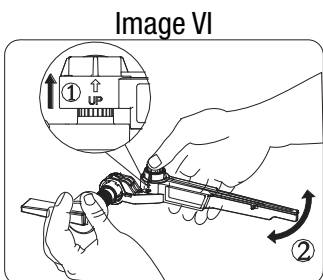


Image VI

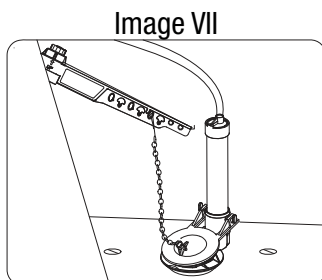


Image VII

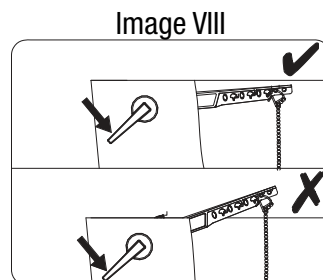
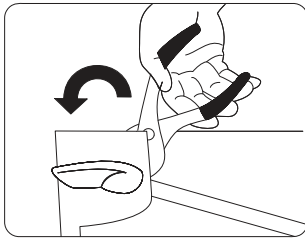


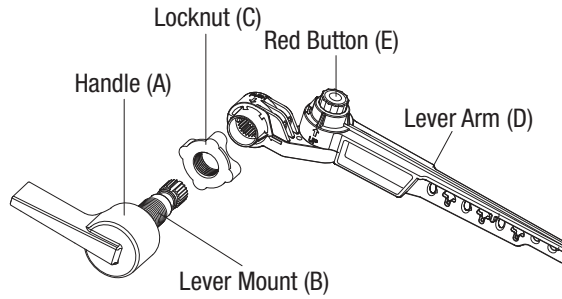
Image VIII

8. For angle adjustment (Image VI) inside toilet, push down on red button (E) and lift lever arm (D) to adjust angle left or right and align placement prior to connecting flapper chain.
9. For lever arm (D) height adjustment inside toilet (Image VII), push in toward lever mount (B) and rotate up or down.
10. Attach chain (Images VII and VIII). Chain needs ½" slack with flapper closed. Arm cannot hit tank cover.

LEFT SIDE VERTICAL (PLASTIC HANDLE)



1. Remove existing handle and arm. Loosen locknut and pull entire arm out through tank hole.



*Image shows Straight Lever Handle Style

2. REFER TO TABLE 1 ON PAGE 1 TO DETERMINE IF YOUR REPLACEMENT INVOLVES A LEFT FRONT, RIGHT FRONT, SIDE, OR ANGLED HANDLE PLACEMENT.

FOR LEFT SIDE VERTICAL TOILETS:

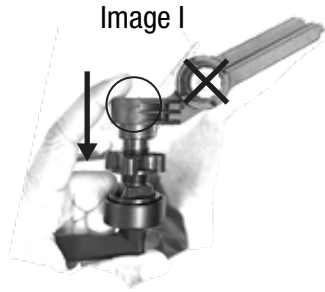


Image I

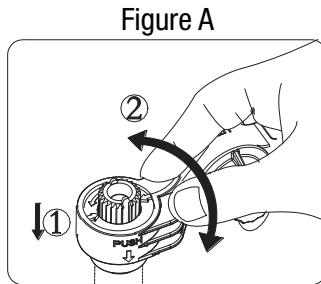


Figure A

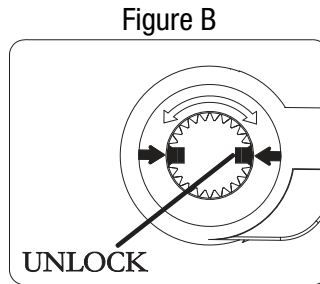


Figure B

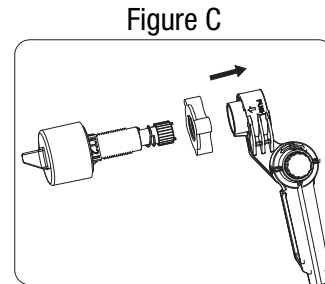


Figure C

3. Remove arm from packaging. Refer to Image I for how to hold the handle. **Do not push red button marked X** in Image I at this time.

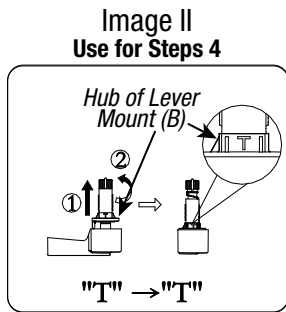


Image II
Use for Steps 4

- Use Image II for step 4
4. Hold the handle in one hand, grab the threaded hub portion of the Lever Mount (B) with the other hand and pull apart (1), compressing the spring at the end. Then rotate the threaded hub 90 degrees (2) until T faces up in the orientation it will be installed in the tank. Release the threaded hub, ensuring it seats fully back into the handle.

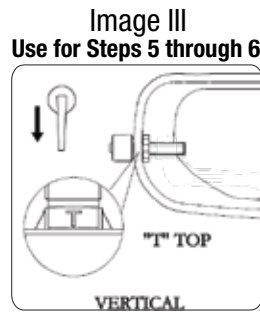


Image III
Use for Steps 5 through 6

- Use Image III for steps 5 through 6
5. Insert lever mount (B) through tank hole with the handle facing left while ensuring the T mark on the hub of the lever mount is facing up.
 6. Reattach locknut (C) back onto lever mount (B) clockwise finger tight, ensuring locknut is facing flat side toward handle.

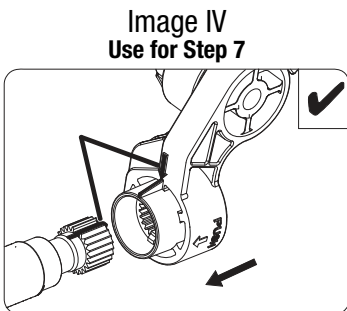


Image IV
Use for Step 7

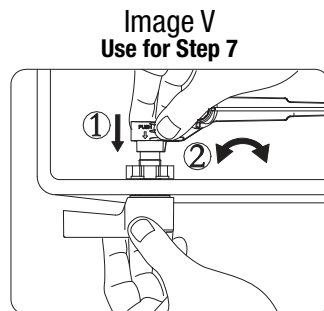


Image V
Use for Step 7

- Use Image IV and Image V for step 7
7. Position lever arm (D) perpendicular (90° Degrees) to handle and slide back onto lever mount (B) using arrows to align with notches; then twist to lock in place.

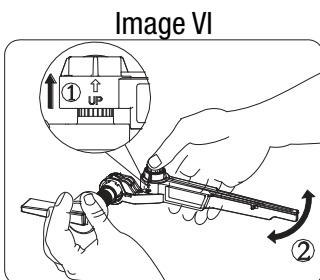


Image VI

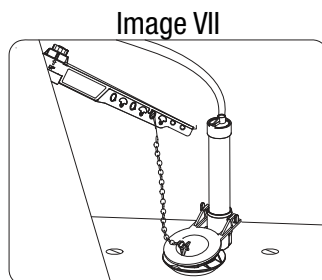


Image VII

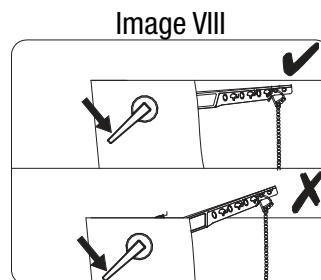
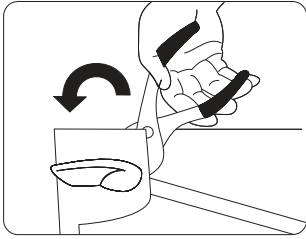


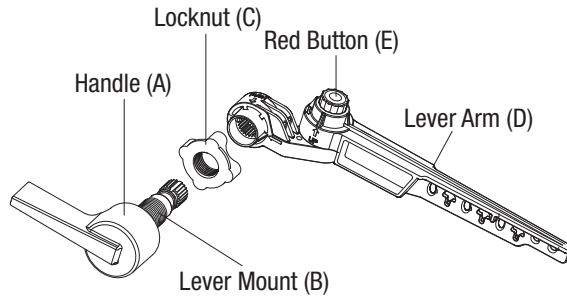
Image VIII

8. For angle adjustment (Image VI) inside toilet, push down on red button (E) and lift lever arm (D) to adjust angle left or right and align placement prior to connecting flapper chain.
9. For lever arm (D) height adjustment inside toilet (Image VII), push in toward lever mount (B) and rotate up or down.
10. Attach chain (Images VII and VIII). Chain needs ½" slack with flapper closed. Arm cannot hit tank cover.

RIGHT FRONT (PLASTIC HANDLE)



1. Remove existing handle and arm. Loosen locknut and pull entire arm out through tank hole.



*Image shows Straight Lever Handle Style

2. REFER TO TABLE 1 ON PAGE 1 TO DETERMINE IF YOUR REPLACEMENT INVOLVES A LEFT FRONT, RIGHT FRONT, SIDE, OR ANGLED HANDLE PLACEMENT.

FOR RIGHT FRONT TOILETS:

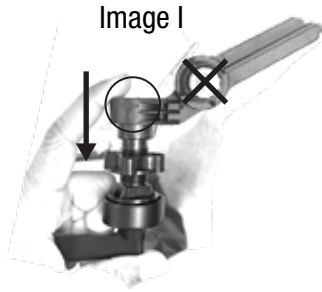


Image I

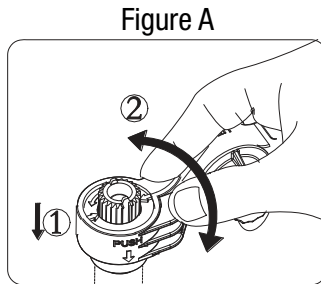


Figure A

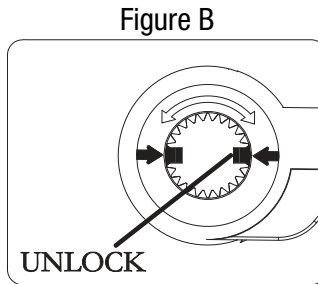


Figure B

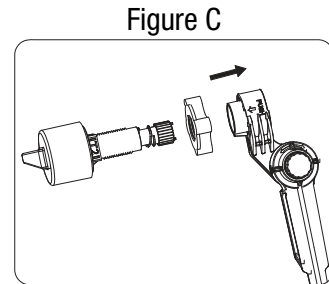


Figure C

3. Remove arm from packaging. Refer to Image I for how to hold the handle. **Do not push red button marked X** in Image I at this time.

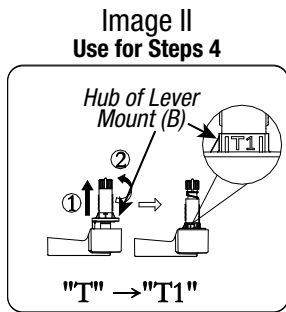


Image II
Use for Steps 4

- Use Image II for step 4
4. Hold the handle in one hand, grab the threaded hub portion of the Lever Mount (B) with the other hand and pull apart (1), compressing the spring at the end. Then rotate the threaded hub 90 degrees (2) until T1 faces up in the orientation it will be installed in the tank. Release the threaded hub, ensuring it seats fully back into the handle.

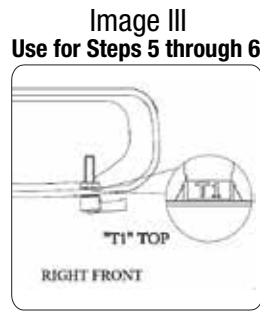


Image III
Use for Steps 5 through 6

- Use Image III for steps 5 through 6
5. Insert lever mount (B) through tank hole with the handle facing right while ensuring the T1 mark on the hub of the lever mount is facing up.
 6. Reattach locknut (C) back onto lever mount (B) clockwise finger tight, ensuring locknut is facing flat side toward handle.

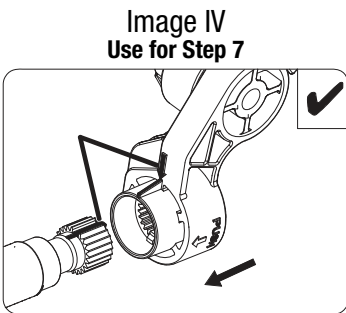


Image IV
Use for Step 7

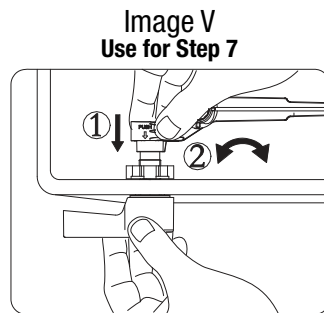


Image V
Use for Step 7

- Use Image IV and Image V for step 7
7. Position lever arm (D) perpendicular (90° Degrees) to handle and slide back onto lever mount (B) using arrows to align with notches; then twist to lock in place. Lever arm (D) will be upside down with red button pointing down when finished

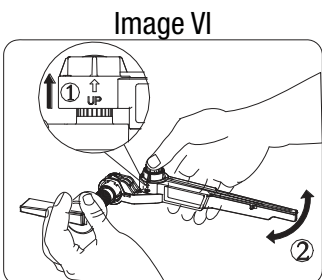


Image VI

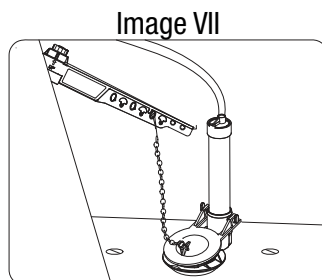


Image VII

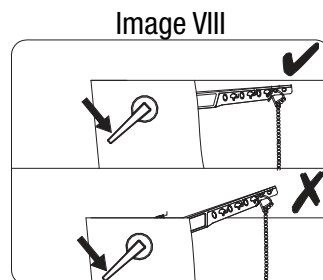
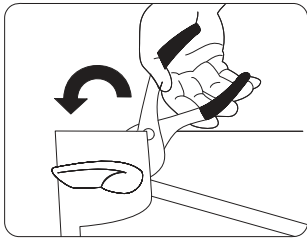


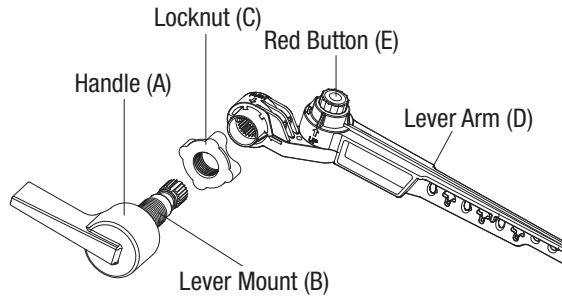
Image VIII

8. For angle adjustment (Image VI) inside toilet, push up on red button (E) and lower lever arm (D) to adjust angle left or right and align placement prior to connecting flapper chain.
9. For lever arm (D) height adjustment inside toilet (Image VII), push in toward lever mount (B) and rotate up or down.
10. Attach chain (Images VII and VIII). Chain needs ½" slack with flapper closed. Arm cannot hit tank cover.

RIGHT ANGLED (PLASTIC HANDLE)



1. Remove existing handle and arm. Loosen locknut and pull entire arm out through tank hole.



*Image shows Straight Lever Handle Style

2. REFER TO TABLE 1 ON PAGE 1 TO DETERMINE IF YOUR REPLACEMENT INVOLVES A LEFT FRONT, RIGHT FRONT, SIDE, OR ANGLED HANDLE PLACEMENT.

FOR RIGHT ANGLED TOILETS:

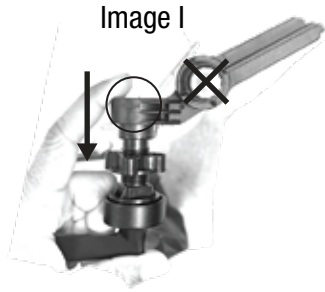


Image I

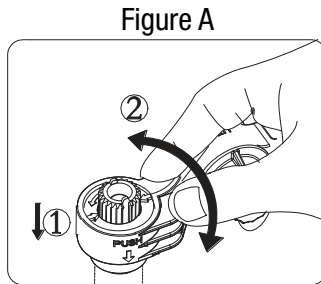


Figure A

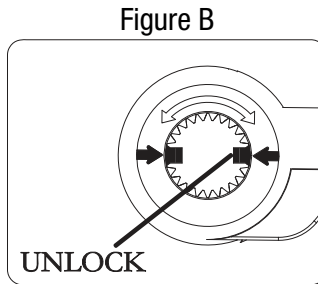


Figure B

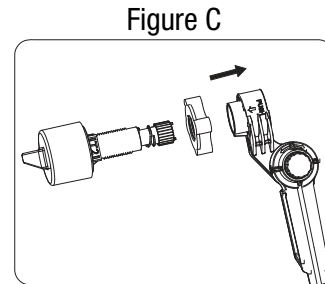


Figure C

3. Remove arm from packaging. Refer to Image I for how to hold the handle. **Do not push red button marked X** in Image I at this time.

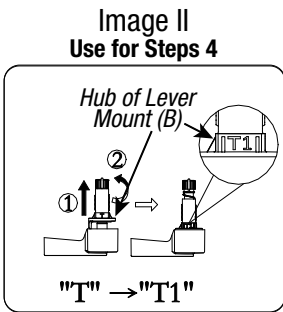


Image II

Use for Steps 4

Use Image II for step 4

4. Hold the handle in one hand, grab the threaded hub portion of the Lever Mount (B) with the other hand and pull apart (1), compressing the spring at the end. Then rotate the threaded hub 90 degrees (2) until T1 faces up in the orientation it will be installed in the tank. Release the threaded hub, ensuring it seats fully back into the handle.

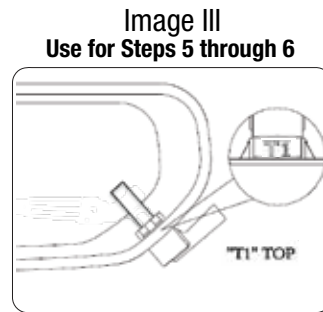


Image III

Use for Steps 5 through 6

Use Image III for steps 5 through 6

5. Insert lever mount (B) through tank hole with the handle facing right while ensuring the T1 mark on the hub of the lever mount is facing up.
6. Reattach locknut (C) back onto lever mount (B) clockwise finger tight, ensuring locknut is facing flat side toward handle.

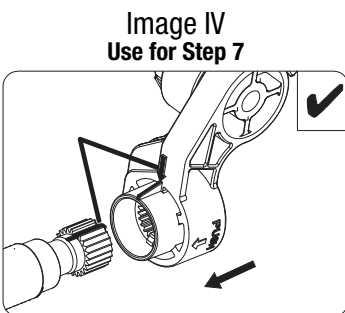


Image IV

Use for Step 7

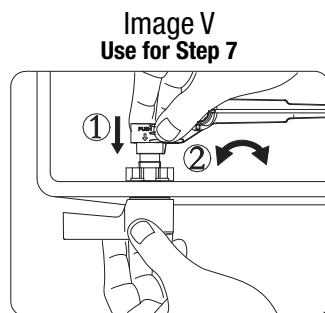


Image V

Use for Step 7

Use Image IV and Image V for step 7

7. Position lever arm (D) perpendicular (90° Degrees) to handle and slide back onto lever mount (B) using arrows to align with notches; then twist to lock in place. Lever arm (D) will be upside down with red button pointing down when finished

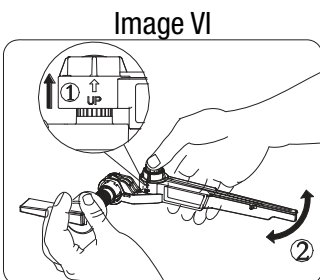


Image VI

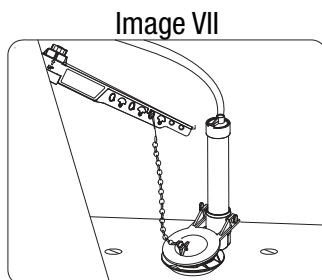


Image VII

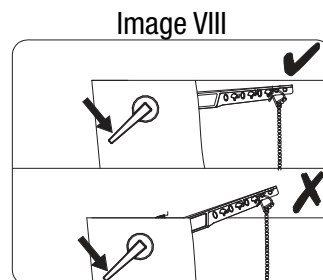


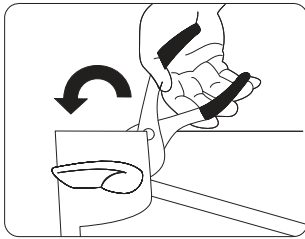
Image VIII

8. For angle adjustment (Image VI) inside toilet, push up on red button (E) and lower lever arm (D) to adjust angle left or right and align placement prior to connecting flapper chain.

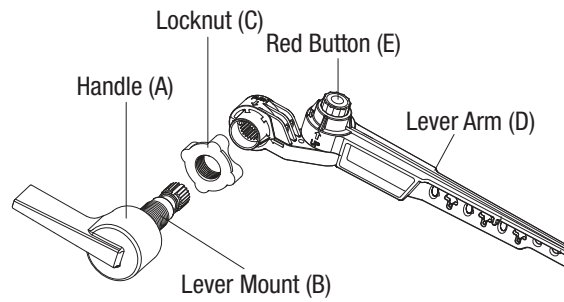
9. For lever arm (D) height adjustment inside toilet (Image VII), push in toward lever mount (B) and rotate up or down.

10. Attach chain (Images VII and VIII). Chain needs 1/2" slack with flapper closed. Arm cannot hit tank cover.

RIGHT SIDE (PLASTIC HANDLE)



1. Remove existing handle and arm. Loosen locknut and pull entire arm out through tank hole.



*Image shows Straight Lever Handle Style

2. REFER TO TABLE 1 ON PAGE 1 TO DETERMINE IF YOUR REPLACEMENT INVOLVES A LEFT FRONT, RIGHT FRONT, SIDE, OR ANGLED HANDLE PLACEMENT.

FOR RIGHT SIDE TOILETS:

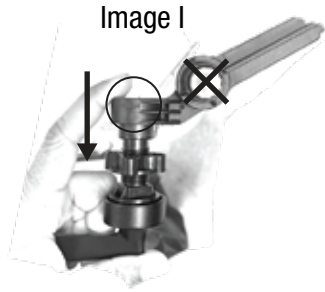


Image I

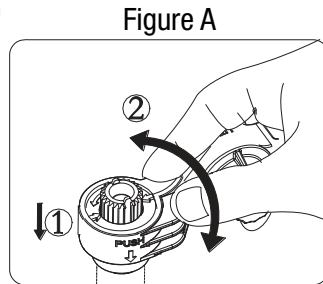


Figure A

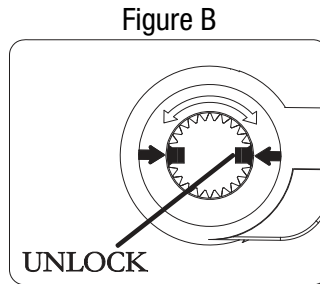


Figure B

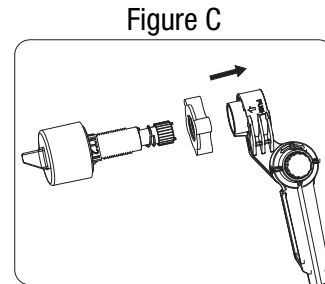


Figure C

3. Remove arm from packaging. Refer to Image I for how to hold the handle. **Do not push red button marked X** in Image I at this time. With handle (A) facing towards you, push lever arm (D) in all the way as shown (Figure A, Arrow 1) and twist lever arm (D) 90° degrees as shown (Figure A, Arrow 2) to align arrows on the back end of the lever arm with guides as shown in (Figure B) and thus separating lever from handle mechanism (Figure C). Unscrew locknut (C) from handle mechanism (left-hand thread).

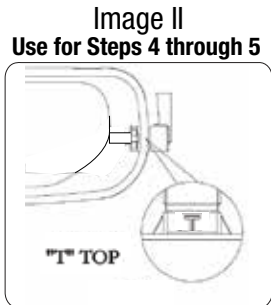


Image II

Use for Steps 4 through 5

Use Image II for steps 4 through 5

4. Insert lever mount (B) through tank hole with the handle facing rear while ensuring the T mark on the hub of the lever mount is facing up.
5. Reattach locknut (C) back onto lever mount (B) clockwise finger tight, ensuring locknut is facing flat side toward handle.

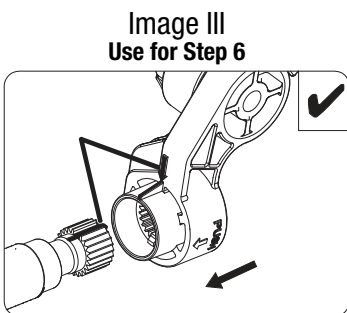


Image III
Use for Step 6

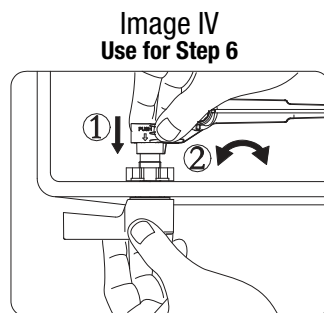


Image IV
Use for Step 6

Use Image III and Image IV for step 6

6. Position lever arm (D) perpendicular (90° Degrees) to handle and slide back onto lever mount (B) using arrows to align with notches; then twist to lock in place. Lever arm (D) will be upside down with red button pointing down when finished.

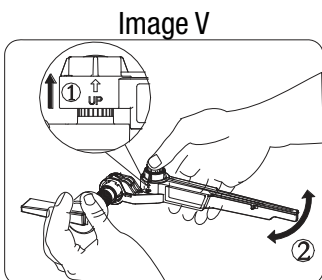


Image V

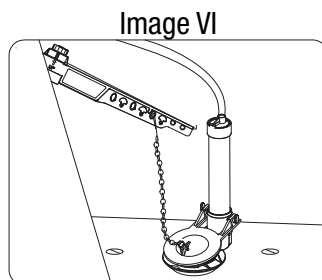


Image VI

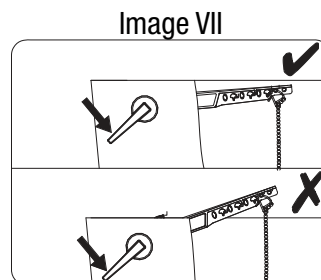
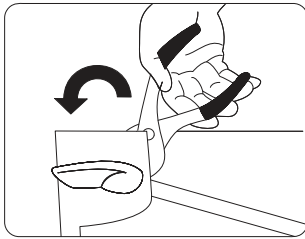


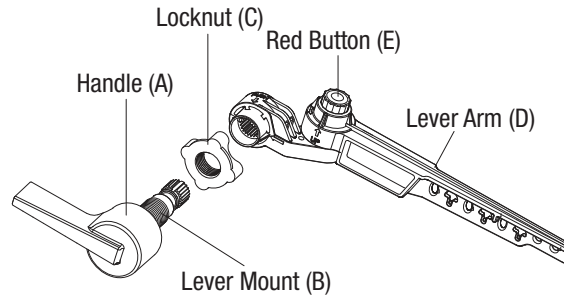
Image VII

7. For angle adjustment (Image V) inside toilet, push up on red button (E) and lower lever arm (D) to adjust angle left or right and align placement prior to connecting flapper chain.
8. For lever arm (D) height adjustment inside toilet (Image VI), push in toward lever mount (B) and rotate up or down.
9. Attach chain (Images VI and VII). Chain needs ½" slack with flapper closed. Arm cannot hit tank cover.

RIGHT SIDE VERTICAL (PLASTIC HANDLE)



1. Remove existing handle and arm. Loosen locknut and pull entire arm out through tank hole.



*Image shows Straight Lever Handle Style

2. REFER TO TABLE 1 ON PAGE 1 TO DETERMINE IF YOUR REPLACEMENT INVOLVES A LEFT FRONT, RIGHT FRONT, SIDE, OR ANGLED HANDLE PLACEMENT.

FOR RIGHT SIDE VERTICAL TOILETS:

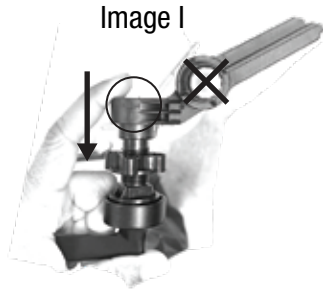


Image I

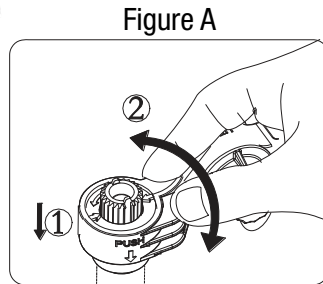


Figure A

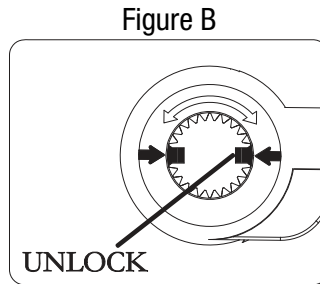


Figure B

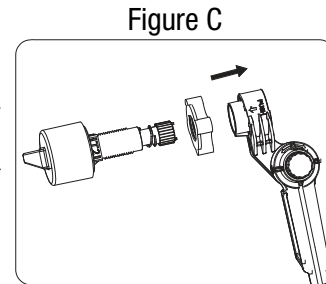


Figure C

3. Remove arm from packaging. Refer to Image I for how to hold the handle. **Do not push red button marked X** in Image I at this time.

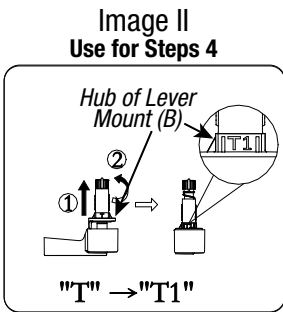


Image II

Use for Steps 4

Use Image II for step 4

4. Hold the handle in one hand, grab the threaded hub portion of the Lever Mount (B) with the other hand and pull apart (1), compressing the spring at the end. Then rotate the threaded hub 90 degrees (2) until T1 faces up in the orientation it will be installed in the tank. Release the threaded hub, ensuring it seats fully back into the handle.

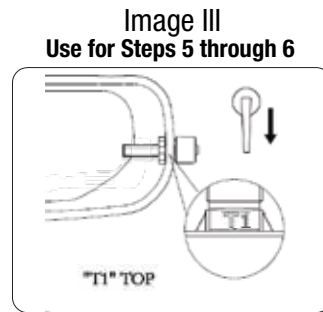


Image III

Use for Steps 5 through 6

Use Image III for steps 5 through 6

5. Insert lever mount (B) through tank hole with the handle facing down while ensuring the T1 mark on the hub of the lever mount is facing up.
6. Reattach locknut (C) back onto lever mount (B) clockwise finger tight, ensuring locknut is facing flat side toward handle.

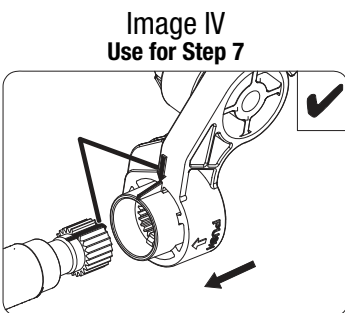


Image IV

Use for Step 7

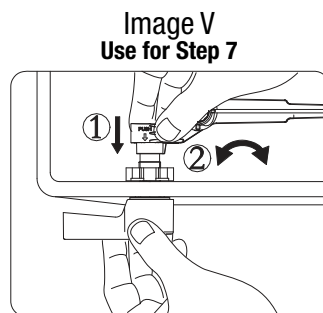


Image V

Use for Step 7

Use Image IV and Image V for step 7

7. Position lever arm (D) perpendicular (90° Degrees) to handle and slide back onto lever mount (B) using arrows to align with notches; then twist to lock in place. Lever arm (D) will be upside down with red button pointing down when finished

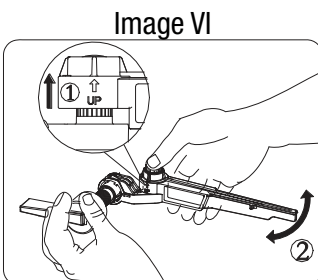


Image VI

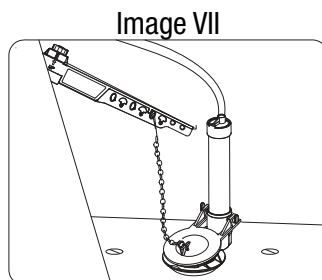


Image VII

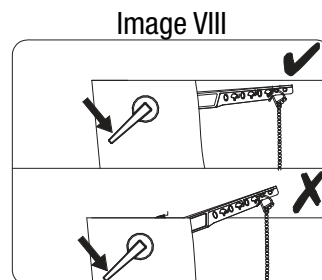


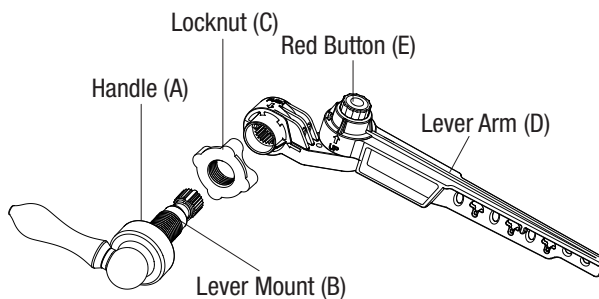
Image VIII

8. For angle adjustment (Image VI) inside toilet, push up on red button (E) and lower lever arm (D) to adjust angle left or right and align placement prior to connecting flapper chain.
9. For lever arm (D) height adjustment inside toilet (Image VII), push in toward lever mount (B) and rotate up or down.
10. Attach chain (Images VII and VIII). Chain needs ½" slack with flapper closed. Arm cannot hit tank cover.

LEFT FRONT (METAL HANDLE)



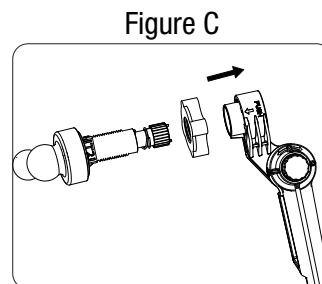
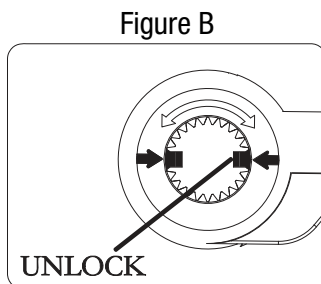
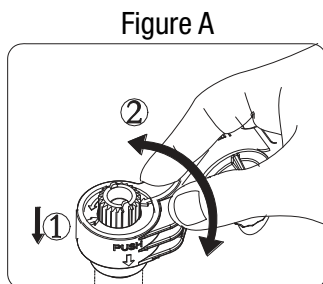
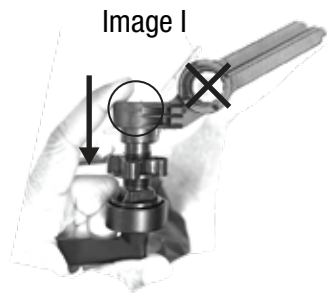
1. Remove existing handle and arm. Loosen locknut and pull entire arm out through tank hole.



*Image shows Decorative Lever Handle Style

2. REFER TO TABLE 1 ON PAGE 1 TO DETERMINE IF YOUR REPLACEMENT INVOLVES A LEFT FRONT, RIGHT FRONT, SIDE, OR ANGLED HANDLE PLACEMENT.

FOR LEFT FRONT TOILETS:



3. Remove arm from packaging. Refer to Image I for how to hold the handle. **Do not push red button marked X** in Image I at this time. With handle (A) facing towards you, push lever arm (D) in all the way as shown (Figure A, Arrow 1) and twist lever arm (D) 90° degrees as shown (Figure A, Arrow 2) to align arrows on the back end of the lever arm with guides as shown in (Figure B) and thus separating lever from handle mechanism (Figure C). Unscrew locknut (C) from handle mechanism (left-hand thread).

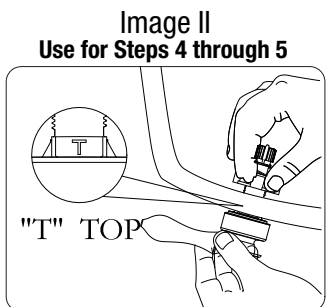


Image II
Use for Steps 4 through 5

Use Image II for steps 4 through 5

4. Insert lever mount (B) through tank hole to position the handle into the tank facing left.
5. Reattach locknut (C) back onto lever mount (B) clockwise finger tight, ensuring locknut is facing flat side toward handle.

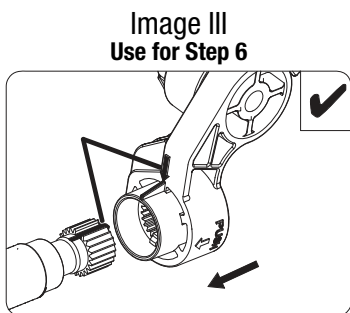


Image III
Use for Step 6

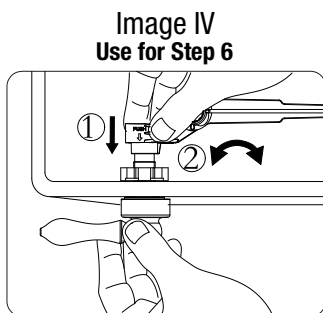


Image IV
Use for Step 6

Use Image III and Image IV for step 6

6. Position lever arm (D) perpendicular (90° Degrees) to handle and slide back onto lever mount (B) using arrows to align with notches; then twist to lock in place.

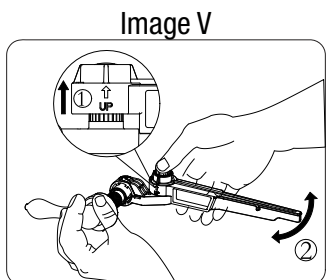


Image V

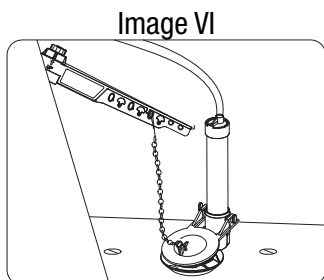


Image VI

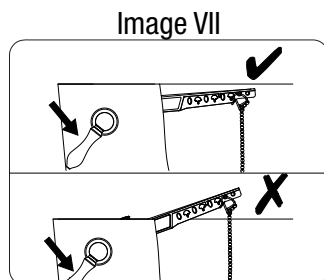
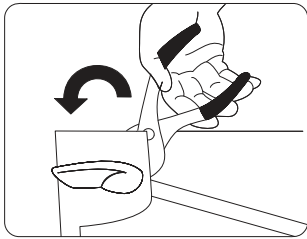


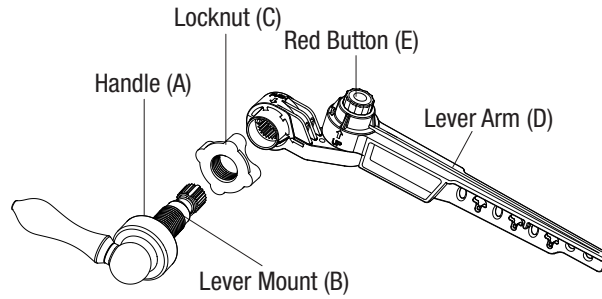
Image VII

7. For angle adjustment (Image V) inside toilet, push down on red button (E) and lift lever arm (D) to adjust angle left or right and align placement prior to connecting flapper chain.
8. For lever arm (D) height adjustment inside toilet (Image VI), push in toward lever mount (B) and rotate up or down.
9. Attach chain (Images VI and VII). Chain needs ½" slack with flapper closed. Arm cannot hit tank cover.

LEFT ANGLED (METAL HANDLE)



1. Remove existing handle and arm. Loosen locknut and pull entire arm out through tank hole.



*Image shows Decorative Lever Handle Style

2. REFER TO TABLE 1 ON PAGE 1 TO DETERMINE IF YOUR REPLACEMENT INVOLVES A LEFT FRONT, RIGHT FRONT, SIDE, OR ANGLED HANDLE PLACEMENT.

FOR LEFT ANGLED TOILETS:

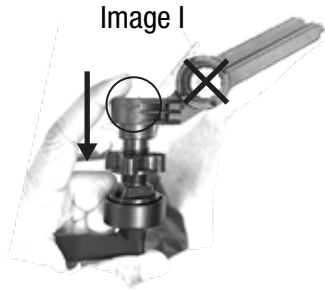


Image I

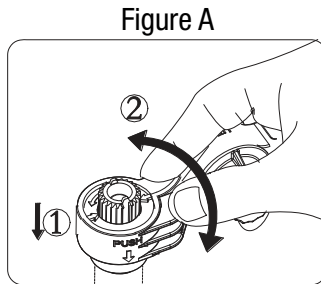


Figure A

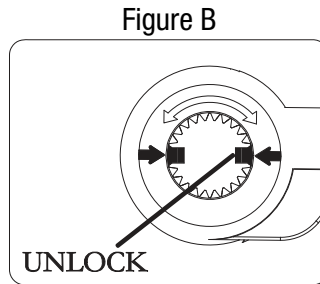


Figure B

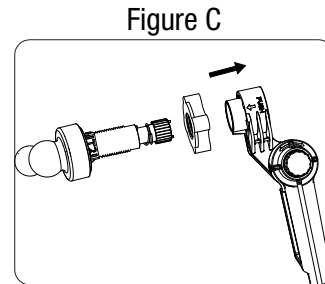


Figure C

3. Remove arm from packaging. Refer to Image I for how to hold the handle. **Do not push red button marked X** in Image I at this time. With handle (A) facing towards you, push lever arm (D) in all the way as shown (Figure A, Arrow 1) and twist lever arm (D) 90° degrees as shown (Figure A, Arrow 2) to align arrows on the back end of the lever arm with guides as shown in (Figure B) and thus separating lever from handle mechanism (Figure C). Unscrew locknut (C) from handle mechanism (left-hand thread).

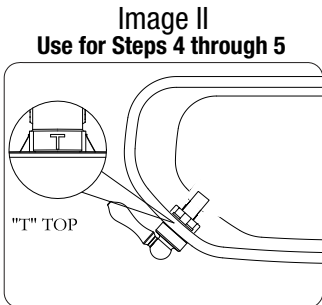


Image II

Use for Steps 4 through 5

Use Image II for steps 4 through 5

4. Insert lever mount (B) through tank hole to position the handle into the tank facing left.
5. Reattach locknut (C) back onto lever mount (B) clockwise finger tight, ensuring locknut is facing flat side toward handle.

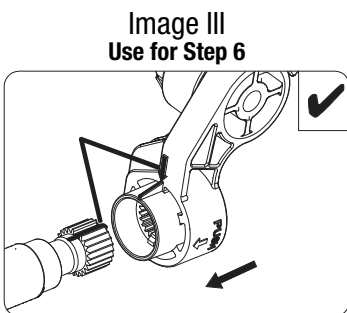


Image III
Use for Step 6

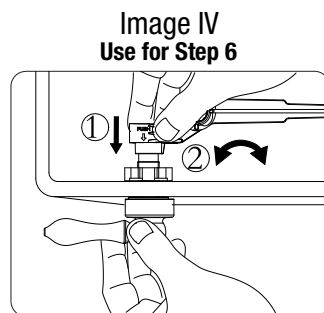


Image IV
Use for Step 6

Use Image III and Image IV for step 6

6. Position lever arm (D) perpendicular (90° Degrees) to handle and slide back onto lever mount (B) using arrows to align with notches; then twist to lock in place.

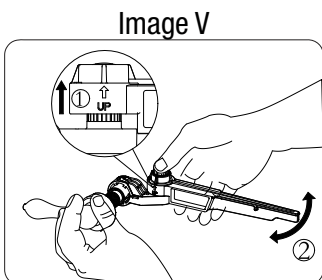


Image V

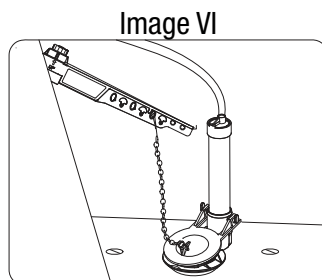


Image VI

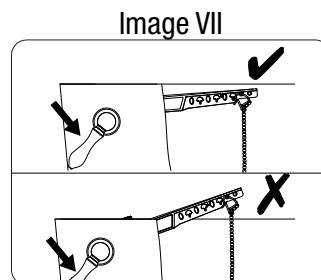


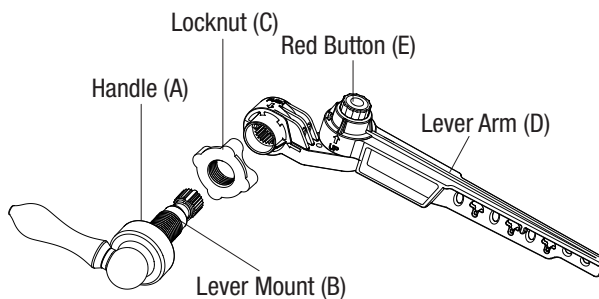
Image VII

7. For angle adjustment (Image V) inside toilet, push down on red button (E) and lift lever arm (D) to adjust angle left or right and align placement prior to connecting flapper chain.
8. For lever arm (D) height adjustment inside toilet (Image VI), push in toward lever mount (B) and rotate up or down.
9. Attach chain (Images VI and VII). Chain needs ½" slack with flapper closed. Arm cannot hit tank cover.

LEFT SIDE (METAL HANDLE)



1. Remove existing handle and arm. Loosen locknut and pull entire arm out through tank hole.



*Image shows Decorative Lever Handle Style

2. REFER TO TABLE 1 ON PAGE 1 TO DETERMINE IF YOUR REPLACEMENT INVOLVES A LEFT FRONT, RIGHT FRONT, SIDE, OR ANGLED HANDLE PLACEMENT.

FOR LEFT SIDE TOILETS:

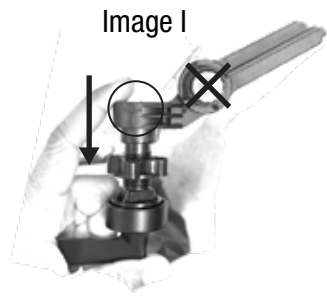


Image I

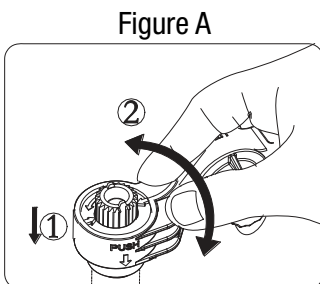


Figure A

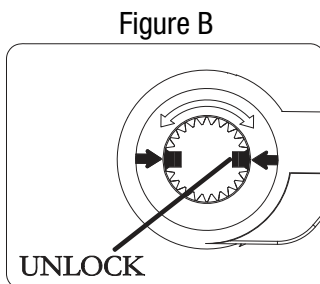


Figure B

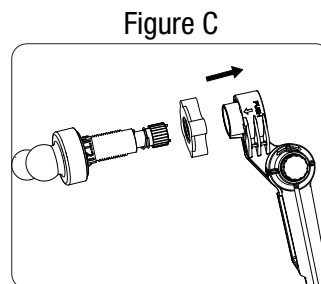


Figure C

3. Remove arm from packaging. Refer to Image I for how to hold the handle. **Do not push red button marked X** in Image I at this time. With handle (A) facing towards you, push lever arm (D) in all the way as shown (Figure A, Arrow 1) and twist lever arm (D) 90° degrees as shown (Figure A, Arrow 2) to align arrows on the back end of the lever arm with guides as shown in (Figure B) and thus separating lever from handle mechanism (Figure C). Unscrew locknut (C) from handle mechanism (left-hand thread).

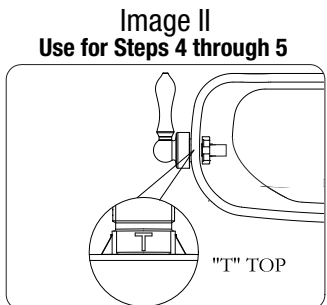


Image II

Use for Steps 4 through 5

Use Image II for steps 4 through 5

4. Insert lever mount (B) through tank hole to position the handle into the tank facing left.
5. Reattach locknut (C) back onto lever mount (B) clockwise finger tight, ensuring locknut is facing flat side toward handle.

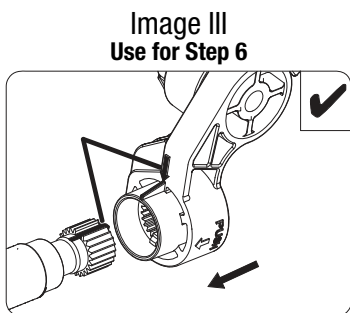


Image III
Use for Step 6

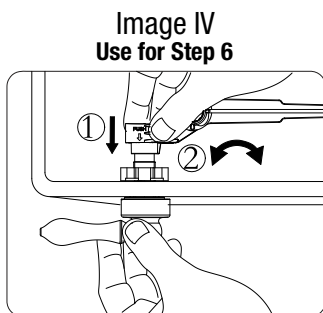


Image IV
Use for Step 6

Use Image III and Image IV for step 6

6. Position lever arm (D) perpendicular (90° Degrees) to handle and slide back onto lever mount (B) using arrows to align with notches; then twist to lock in place.

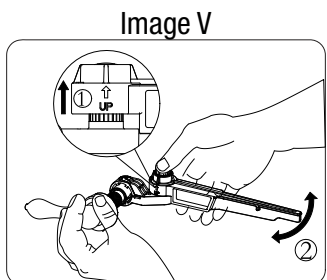


Image V

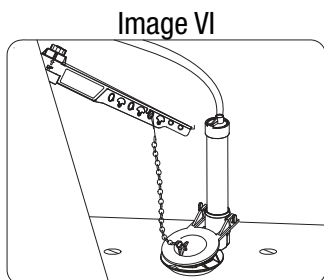


Image VI

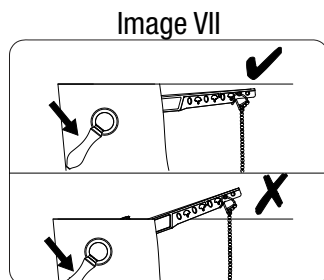


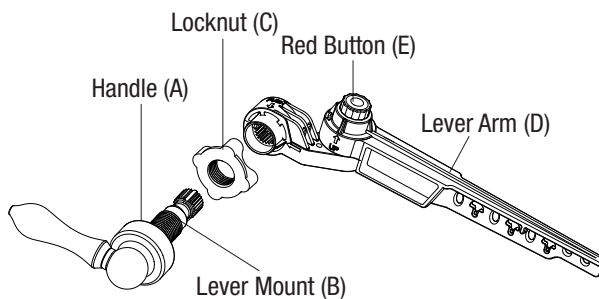
Image VII

7. For angle adjustment (Image V) inside toilet, push down on red button (E) and lift lever arm (D) to adjust angle left or right and align placement prior to connecting flapper chain.
8. For lever arm (D) height adjustment inside toilet (Image VI), push in toward lever mount (B) and rotate up or down.
9. Attach chain (Images VI and VII). Chain needs 1/2" slack with flapper closed. Arm cannot hit tank cover.

LEFT SIDE VERTICAL (METAL HANDLE)



1. Remove existing handle and arm. Loosen locknut and pull entire arm out through tank hole.



*Image shows Decorative Lever Handle Style

2. REFER TO TABLE 1 ON PAGE 1 TO DETERMINE IF YOUR REPLACEMENT INVOLVES A LEFT FRONT, RIGHT FRONT, SIDE, OR ANGLED HANDLE PLACEMENT.

FOR LEFT SIDE VERTICAL TOILETS:

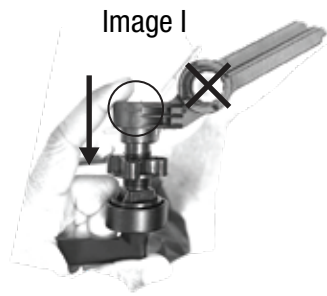


Image I

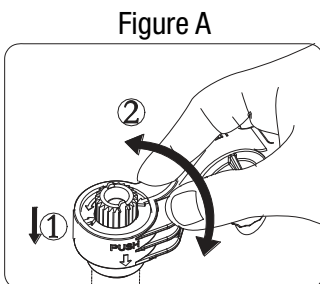


Figure A

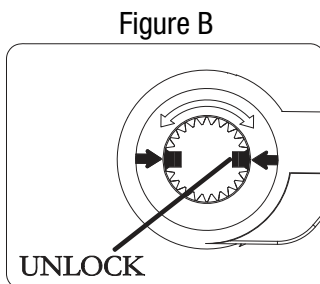


Figure B

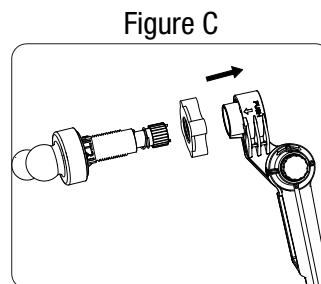


Figure C

3. Remove arm from packaging. Refer to Image I for how to hold the handle. **Do not push red button marked X** in Image I at this time.

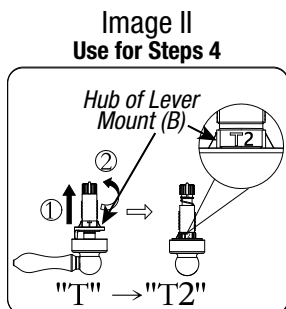


Image II
Use for Steps 4

- Use Image II for step 4
4. Hold the handle in one hand, grab the threaded hub portion of the Lever Mount (B) with the other hand and pull apart (1), compressing the spring at the end. Then rotate the threaded hub 90 degrees (2) until T2 faces up in the orientation it will be installed in the tank. Release the threaded hub, ensuring it seats fully back into the handle.

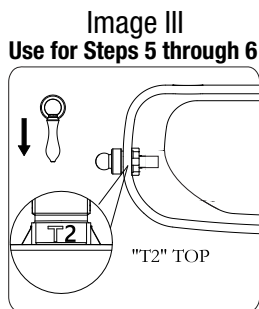


Image III
Use for Steps 5 through 6

- Use Image III for steps 5 through 6
5. Insert lever mount (B) through tank hole with the handle facing left while ensuring the T2 mark on the hub of the lever mount is facing up.
 6. Reattach locknut (C) back onto lever mount (B) clockwise finger tight, ensuring locknut is facing flat side toward handle.

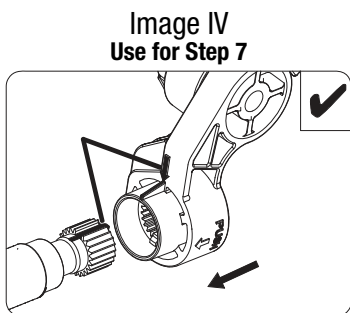


Image IV
Use for Step 7

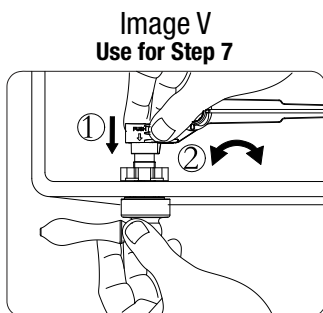


Image V
Use for Step 7

- Use Image IV and Image V for step 7
7. Position lever arm (D) perpendicular (90° Degrees) to handle and slide back onto lever mount (B) using arrows to align with notches; then twist to lock in place.

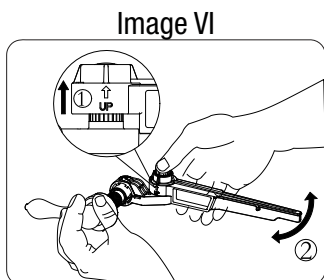


Image VI

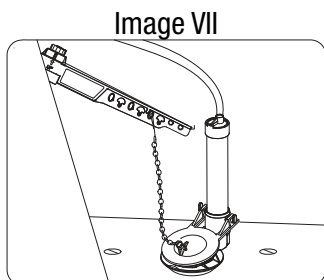


Image VII

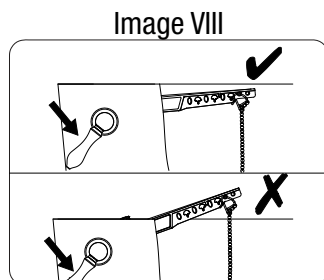
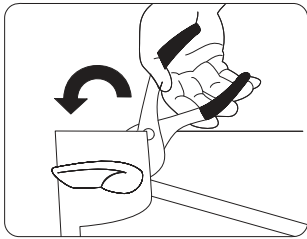


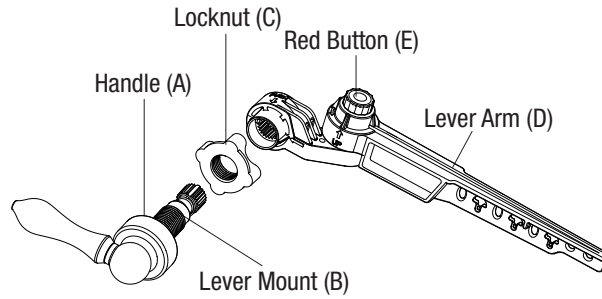
Image VIII

8. For angle adjustment (Image VI) inside toilet, push down on red button (E) and lift lever arm (D) to adjust angle left or right and align placement prior to connecting flapper chain.
9. For lever arm (D) height adjustment inside toilet (Image VII), push in toward lever mount (B) and rotate up or down.
10. Attach chain (Images VII and VIII). Chain needs ½" slack with flapper closed. Arm cannot hit tank cover.

RIGHT FRONT (METAL HANDLE)



1. Remove existing handle and arm. Loosen locknut and pull entire arm out through tank hole.



*Image shows Decorative Lever Handle Style

2. REFER TO TABLE 1 ON PAGE 1 TO DETERMINE IF YOUR REPLACEMENT INVOLVES A LEFT FRONT, RIGHT FRONT, SIDE, OR ANGLED HANDLE PLACEMENT.

FOR RIGHT FRONT TOILETS:

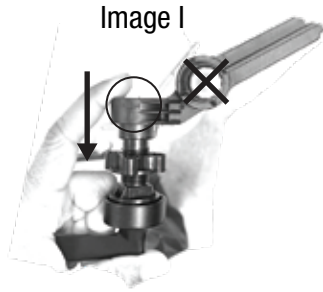


Image I

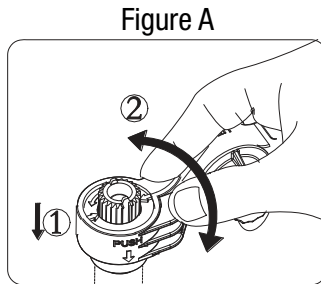


Figure A

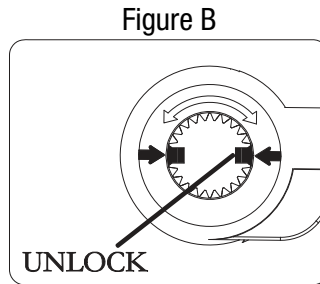


Figure B

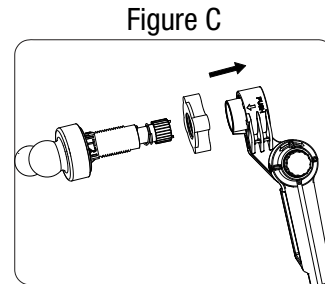


Figure C

3. Remove arm from packaging. Refer to Image I for how to hold the handle. **Do not push red button marked X** in Image I at this time.

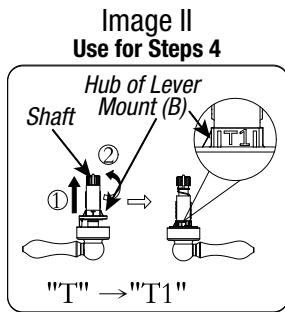


Image II
Use for Steps 4

- Use Image II for step 4
4. Holding the handle in your right hand with the shaft pointing straight up, grab the threaded hub portion of the Lever Mount (B) with the other hand and pull apart (1), compressing the spring at the end. Then rotate the threaded hub (2) until T1 faces up in the orientation it will be installed in the tank. Release the threaded hub, ensuring it seats fully back into the handle.

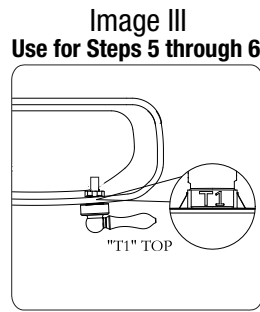


Image III
Use for Steps 5 through 6

- Use Image III for steps 5 through 6
5. Insert lever mount (B) through tank hole with the handle facing right while ensuring the T1 mark on the hub of the lever mount is facing up.
 6. Reattach locknut (C) back onto lever mount (B) clockwise finger tight, ensuring locknut is facing flat side toward handle.

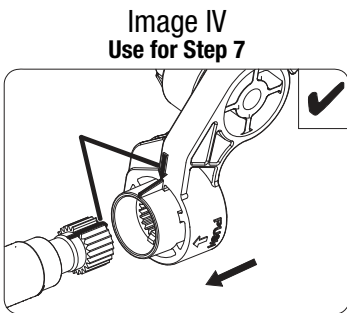


Image IV
Use for Step 7

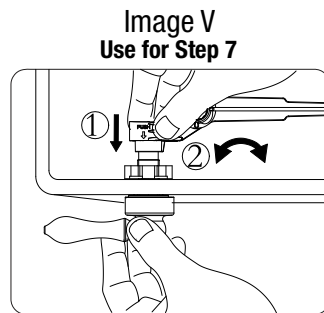


Image V
Use for Step 7

- Use Image IV and Image V for step 7
7. Position lever arm (D) perpendicular (90° Degrees) to handle and slide back onto lever mount (B) using arrows to align with notches; then twist to lock in place. Lever arm (D) will be upside down with red button pointing down when finished.

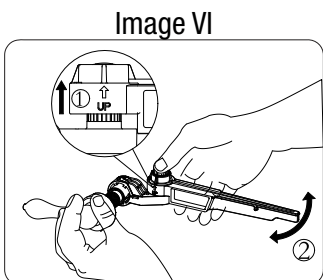


Image VI

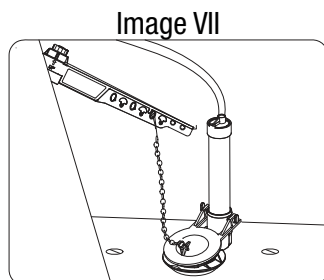


Image VII

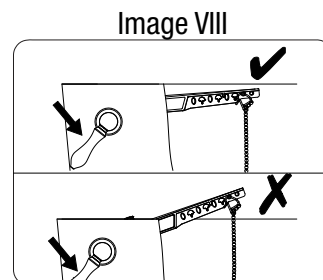
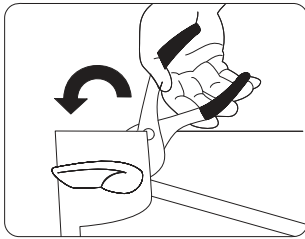


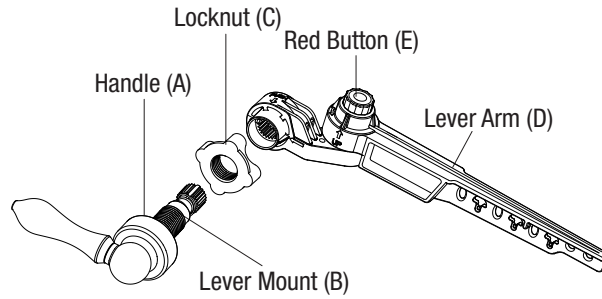
Image VIII

8. For angle adjustment (Image VI) inside toilet, push up on red button (E) and lower lever arm (D) to adjust angle left or right and align placement prior to connecting flapper chain.
9. For lever arm (D) height adjustment inside toilet (Image VII), push in toward lever mount (B) and rotate up or down.
10. Attach chain (Images VII and VIII). Chain needs ½" slack with flapper closed. Arm cannot hit tank cover.

RIGHT ANGLED (METAL HANDLE)



1. Remove existing handle and arm. Loosen locknut and pull entire arm out through tank hole.



*Image shows Decorative Lever Handle Style

2. REFER TO TABLE 1 ON PAGE 1 TO DETERMINE IF YOUR REPLACEMENT INVOLVES A LEFT FRONT, RIGHT FRONT, SIDE, OR ANGLED HANDLE PLACEMENT.

FOR RIGHT ANGLED TOILETS:

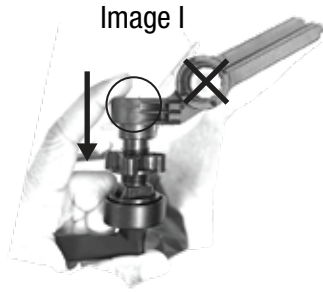


Image I

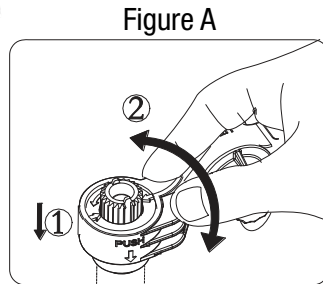


Figure A

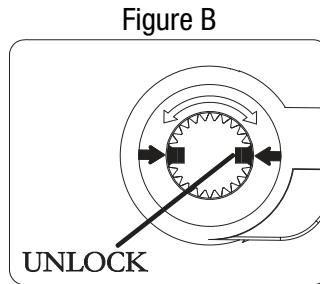


Figure B

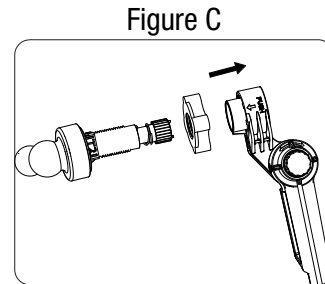


Figure C

3. Remove arm from packaging. Refer to Image I for how to hold the handle. **Do not push red button marked X** in Image I at this time.

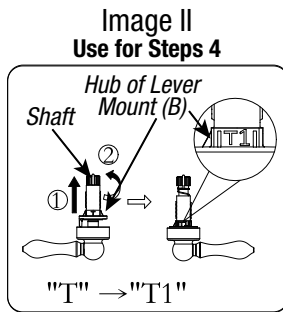


Image II
Use for Steps 4

- Use Image II for step 4
4. Holding the handle in your right hand with the shaft pointing straight up, grab the threaded hub portion of the Lever Mount (B) with the other hand and pull apart (1), compressing the spring at the end. Then rotate the threaded hub (2) until T1 faces up in the orientation it will be installed in the tank. Release the threaded hub, ensuring it seats fully back into the handle.

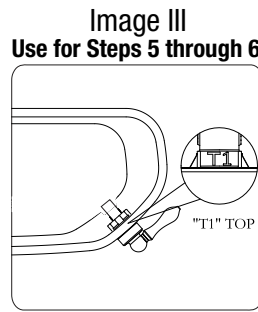


Image III
Use for Steps 5 through 6

- Use Image III for steps 5 through 6
5. Insert lever mount (B) through tank hole with the handle facing right while ensuring the T1 mark on the hub of the lever mount is facing up.
 6. Reattach locknut (C) back onto lever mount (B) clockwise finger tight, ensuring locknut is facing flat side toward handle.

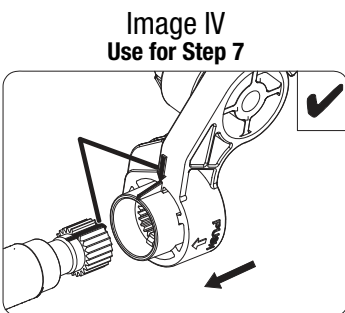


Image IV
Use for Step 7

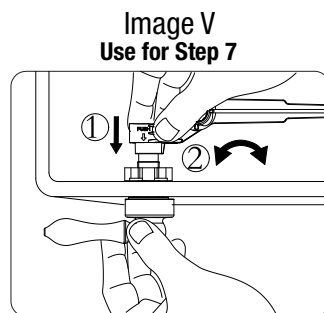


Image V
Use for Step 7

- Use Image IV and Image V for step 7
7. Position lever arm (D) perpendicular (90° Degrees) to handle and slide back onto lever mount (B) using arrows to align with notches; then twist to lock in place. Lever arm (D) will be upside down with red button pointing down when finished

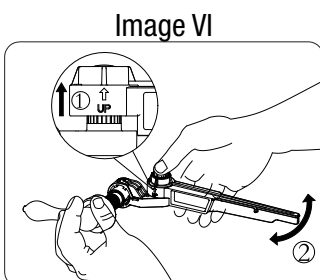


Image VI

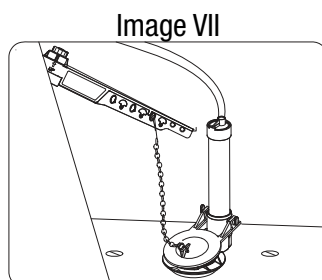


Image VII

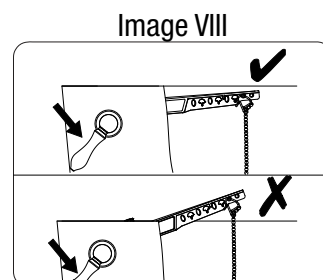
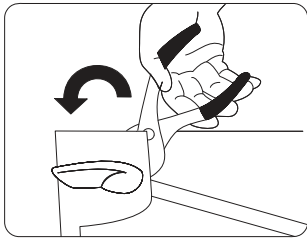


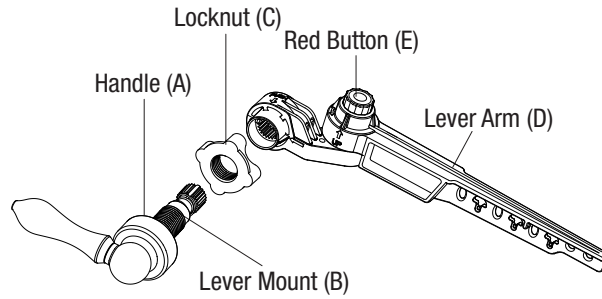
Image VIII

8. For angle adjustment (Image VI) inside toilet, push up on red button (E) and lower lever arm (D) to adjust angle left or right and align placement prior to connecting flapper chain.
9. For lever arm (D) height adjustment inside toilet (Image VII), push in toward lever mount (B) and rotate up or down.
10. Attach chain (Images VII and VIII). Chain needs 1/2" slack with flapper closed. Arm cannot hit tank cover.

RIGHT SIDE (METAL HANDLE)



1. Remove existing handle and arm. Loosen locknut and pull entire arm out through tank hole.



*Image shows Decorative Lever Handle Style

2. REFER TO TABLE 1 ON PAGE 1 TO DETERMINE IF YOUR REPLACEMENT INVOLVES A LEFT FRONT, RIGHT FRONT, SIDE, OR ANGLED HANDLE PLACEMENT.

FOR RIGHT SIDE TOILETS:

Image I

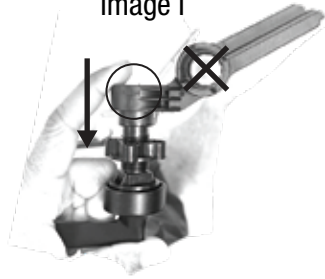


Figure A

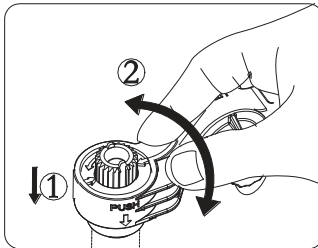


Figure B

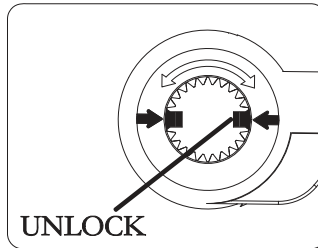
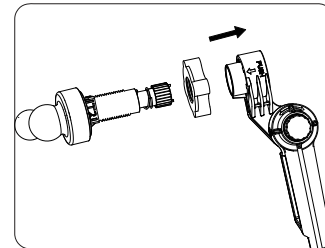
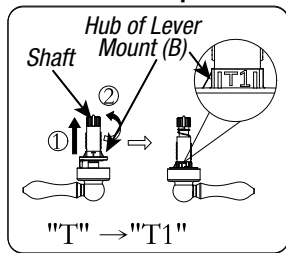


Figure C



3. Remove arm from packaging. Refer to Image I for how to hold the handle. **Do not push red button marked X** in Image I at this time.

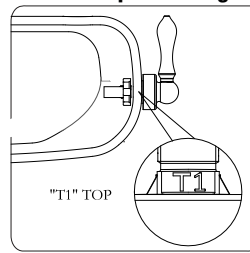
Image II
Use for Steps 4



Use Image II for step 4

4. Holding the handle in your right hand with the shaft pointing straight up, grab the threaded hub portion of the Lever Mount (B) with the other hand and pull apart (1), compressing the spring at the end. Then rotate the threaded hub (2) until T1 faces up in the orientation it will be installed in the tank. Release the threaded hub, ensuring it seats fully back into the handle.

Image III
Use for Steps 5 through 6



Use Image III for steps 5 through 6

5. Insert lever mount (B) through tank hole with the handle facing right while ensuring the T1 mark on the hub of the lever mount is facing up.
6. Reattach locknut (C) back onto lever mount (B) clockwise finger tight, ensuring locknut is facing flat side toward handle.

Image IV
Use for Step 7

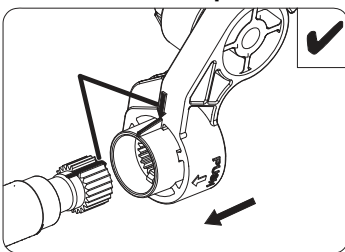
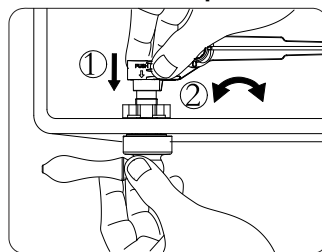


Image V
Use for Step 7



Use Image IV and Image V for step 7

7. Position lever arm (D) perpendicular (90° Degrees) to handle and slide back onto lever mount (B) using arrows to align with notches; then twist to lock in place. Lever arm (D) will be upside down with red button pointing down when finished

Image VI

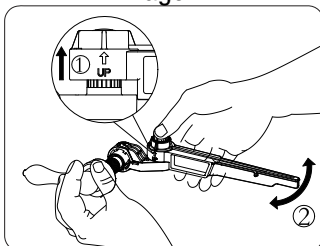


Image VII

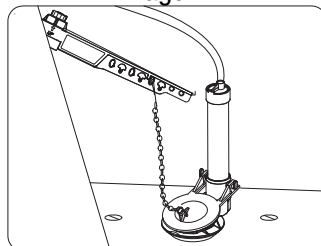
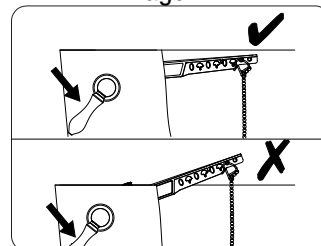
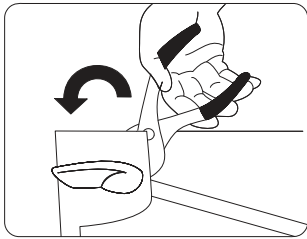


Image VIII

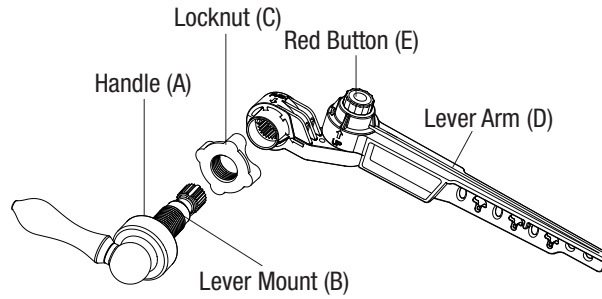


8. For angle adjustment (Image VI) inside toilet, push up on red button (E) and lower lever arm (D) to adjust angle left or right and align placement prior to connecting flapper chain.
9. For lever arm (D) height adjustment inside toilet (Image VII), push in toward lever mount (B) and rotate up or down.
10. Attach chain (Images VII and VIII). Chain needs 1/2" slack with flapper closed. Arm cannot hit tank cover.

RIGHT SIDE VERTICAL (METAL HANDLE)



1. Remove existing handle and arm. Loosen locknut and pull entire arm out through tank hole.



*Image shows Decorative Lever Handle Style

2. REFER TO TABLE 1 ON PAGE 1 TO DETERMINE IF YOUR REPLACEMENT INVOLVES A LEFT FRONT, RIGHT FRONT, SIDE, OR ANGLED HANDLE PLACEMENT.

FOR RIGHT SIDE VERTICAL TOILETS:

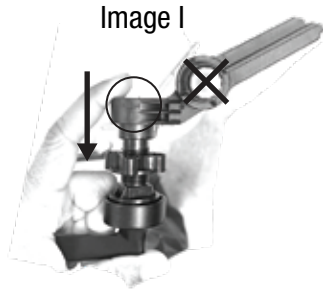


Image I

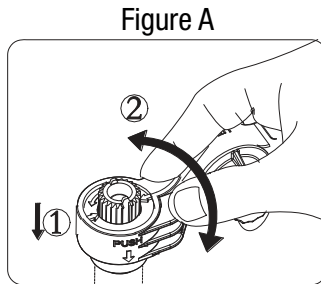


Figure A

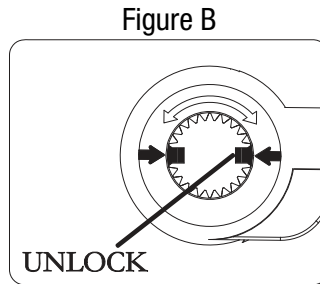


Figure B

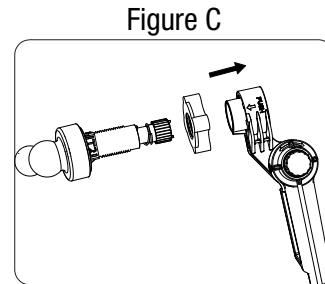


Figure C

3. Remove arm from packaging. Refer to Image I for how to hold the handle. **Do not push red button marked X** in Image I at this time.

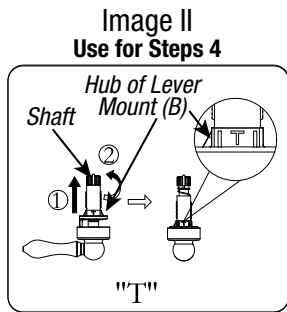


Image II
Use for Steps 4

- Use Image II for step 4
4. Holding the handle in your right hand with the shaft pointing straight up and the handle pointing away from you, grab the threaded hub portion of the Lever Mount (B) with the other hand and pull apart (1), compressing the spring at the end. Then rotate the threaded hub (2) until T faces up in the orientation it will be installed in the tank. Release the threaded hub, ensuring it seats fully back into the handle.

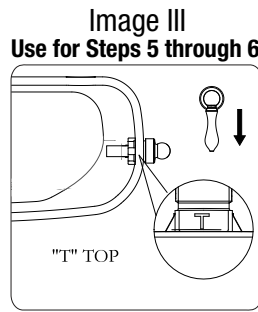


Image III
Use for Steps 5 through 6

- Use Image III for steps 5 through 6
5. Insert lever mount (B) through tank hole with the handle facing down while ensuring the T mark on the hub of the lever mount is facing up.
 6. Reattach locknut (C) back onto lever mount (B) clockwise finger tight, ensuring locknut is facing flat side toward handle.

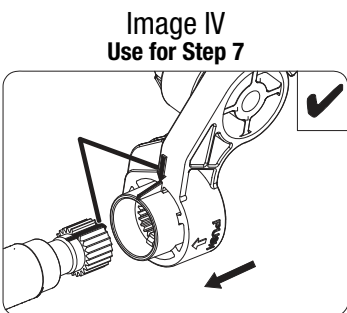


Image IV
Use for Step 7

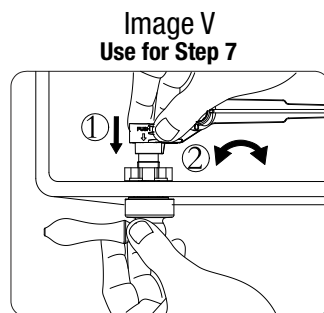


Image V
Use for Step 7

- Use Image IV and Image V for step 7
7. Position lever arm (D) perpendicular (90° Degrees) to handle and slide back onto lever mount (B) using arrows to align with notches; then twist to lock in place. Lever arm (D) will be upside down with red button pointing down when finished

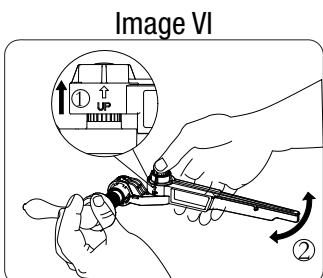


Image VI

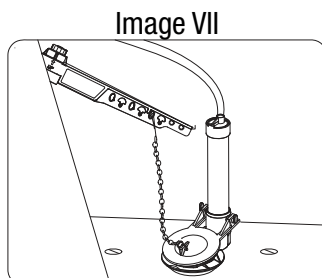


Image VII

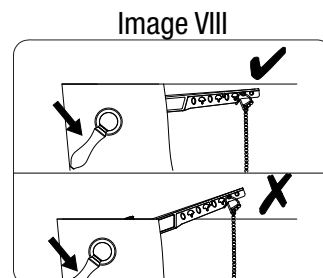


Image VIII

8. For angle adjustment (Image VI) inside toilet, push up on red button (E) and lower lever arm (D) to adjust angle left or right and align placement prior to connecting flapper chain.
9. For lever arm (D) height adjustment inside toilet (Image VII), push in toward lever mount (B) and rotate up or down.
10. Attach chain (Images VII and VIII). Chain needs 1/2" slack with flapper closed. Arm cannot hit tank cover.



DANCO® WARRANTY

Subject to the exclusions herein, Danco, Inc. (Seller) warrants to the original purchaser (Buyer) of this 12063 product (Product) that the Product will be free from material defects in workmanship and materials under normal use and service for the expected lifetime of the Product, which is 7 years from the date of purchase.

Seller's sole and exclusive obligation under this warranty (and Buyer's sole and exclusive remedy) shall be upon prompt written notice by Buyer to Seller during the warranty period of any breach of this warranty to either replace or repair, at Seller's option, any defective product or part found by Seller to be defective. This limited warranty only covers replacement or repair of the Product or parts thereof at Seller's facility and does not include the cost of shipment, labor, inspection, removal or installation of the new Product or parts.

Except for the limited warranty expressly provided herein, Seller disclaims and excludes all other warranties, express or implied, including, without limitation, implied warranties of merchantability, and fitness for a particular purpose. There is NO WARRANTY in cases of: negligence; abuse; misuse; abnormal usage; being subjected to harmful conditions (such as freezing or overheating); accidents; normal wear and tear; failure to follow Seller's instructions; improper installation; over-tightening; product modification; failure of proper storage or maintenance; or exposure of the Product to in tank drop in cleaning products, including but not limited to those containing bleach or chlorines.

In no event shall Seller be liable for incidental, compensatory, punitive, consequential, indirect, special, water damage, flooding, property damage, personal injury or other damages. Seller's aggregate liability with respect to a defective product shall be limited to the monies paid to the Seller for that defective product.

This warranty does not apply to local building code compliances. Since local code requirements vary greatly throughout the country, Distributors, Authorized Service Representatives, Dealers, Installation Contractors, and users of plumbing products should determine whether there are any code restrictions applicable in any way to the product to insure local code compliances before installation. Danco® makes no representation or warranty regarding, and shall not be responsible for, any code compliances.

Prompt written notice of any warranty claim or request for warranty service should be sent to Seller at the following address: Danco, Inc., Customer Service, 2727 Chemsearch Boulevard, Irving, Texas 75062.

DO NOT USE IN-TANK DROP-IN TOILET BOWL CLEANERS containing harsh chemicals, bleach or chlorine, Use of such products will **RESULT IN DAMAGE** to tank components and **MAY CAUSE FLOODING AND PROPERTY DAMAGE** and **WILL VOID THE WARRANTY**.

DO NOT OVERTIGHTEN nut or tank/bowl may crack and/or leak.

GARANTÍA DE DANCO®

Sujeto a las exclusiones aquí expuestas, Danco, Inc. (Vendedor) garantiza al comprador original (Comprador) del producto 12063 que éste no presentará defectos materiales ni de fabricación, en condiciones de uso y servicio normales, durante la vida útil prevista, que es de 7 años a partir de la fecha de compra original. **La única y exclusiva obligación del vendedor bajo esta garantía (y la única y exclusiva compensación para el comprador) será, mediante notificación escrita inmediata por el comprador al vendedor sobre cualquier falla durante el período de garantía; reemplazar o reparar, a criterio del vendedor, cualquier pieza o producto calificado como defectuoso por el vendedor.** Esta garantía limitada sólo cubre el reemplazo o la reparación del producto o de sus piezas en las instalaciones del vendedor, y no incluye los costos de envío, mano de obra, inspección, retiro o instalación del producto ni de piezas nuevas.

A excepción de la garantía limitada descrita aquí, el vendedor no reconoce y excluye cualquier otra, expresa o implícita, sin limitación, incluidas las garantías implícitas de comercialización e idoneidad del producto para un propósito en particular. NO HAY GARANTÍA en casos de: negligencia, abuso, uso indebido, anormal o en condiciones perjudiciales (tales como congelamiento o sobrecalentamiento); accidentes, uso y desgaste normal, no cumplir las instrucciones del vendedor, instalación incorrecta, ajuste excesivo, modificación del producto, almacenarlo o guardarlo inadecuadamente o exponerlo a productos de limpieza en tanque, incluyendo, pero sin limitarse a, los productos que contengan blanqueadores o cloro.

En ningún caso el vendedor será responsable por daños consecuentes, compensatorios, correctivos, secundarios, indirectos, especiales o causados por el agua o por inundaciones, ni por daños a la propiedad, lesiones personales u otros daños. La responsabilidad total del vendedor con respecto a un producto defectuoso se limitará al importe pagado al vendedor por ese producto.

Esta garantía no aplica para el cumplimiento de los códigos locales de construcción. Debido a que los requerimientos de códigos varían significativamente a través de todo el país, los distribuidores, los representantes de servicios autorizados, los comerciantes, los contratistas de instalación y usuarios de productos de plomería deben determinar si existen restricciones de código aplicables de alguna forma al producto, para garantizar el cumplimiento de los códigos locales antes de la instalación. Danco no hace ninguna representación ni garantía, ni se hace responsable por el cumplimiento de ningún código.

La notificación escrita inmediata de reclamación o de solicitud del servicio de garantía debe enviarse al Vendedor a la siguiente dirección: Danco, Inc., Customer Service, 2727 Chemsearch Boulevard, Irving, Texas 75062.

NO USES LIMPIADORES DE TAZA DE INODORO DE LOS QUE SE DEPOSITAN DENTRO DEL TANQUE QUE CONTENGAN BLANQUEADOR, CLORO, ALCOHOL U OTROS SOLVENTES ORGÁNICOS. EL USO DE ESTOS PRODUCTOS PROVOCARÁ DAÑOS A LOS COMPONENTES DEL TANQUE Y PUEDE PROVOCAR INUNDACIONES Y DAÑOS A LA PROPIEDAD. EL USO DE TALES PRODUCTOS ANULARÁ LA GARANTÍA de Danco.

NO APRIETES DEMASIADO: EL TANQUE O EL RECIPIENTE PUEDEN AGRIETARSE O FUGAS.