



INSTALLATION INSTRUCTIONS FOR 3" ADJUSTABLE FLUSH VALVE

Visit
DANCO.COM
for Easy D.I.Y. Solutions

Tools Required:



Large Adjustable Pliers



Sponge

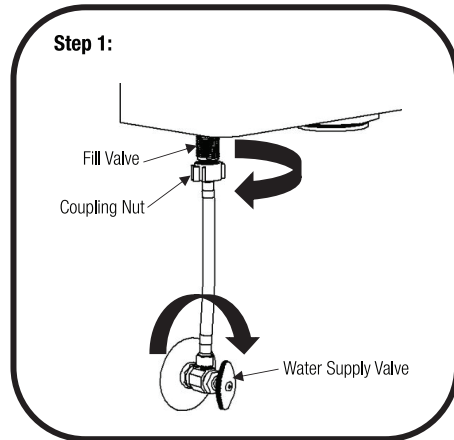


Bucket

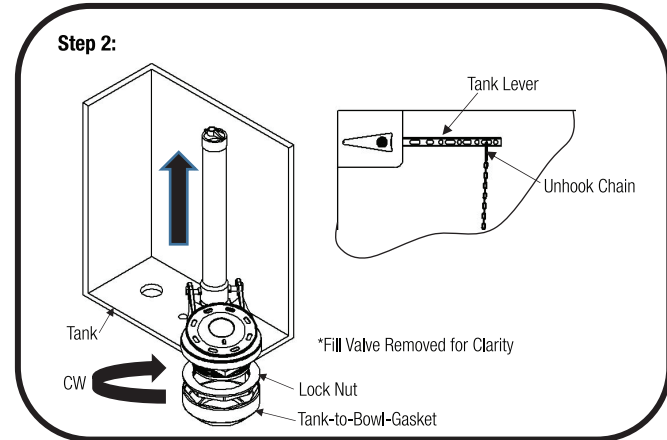
WARNING



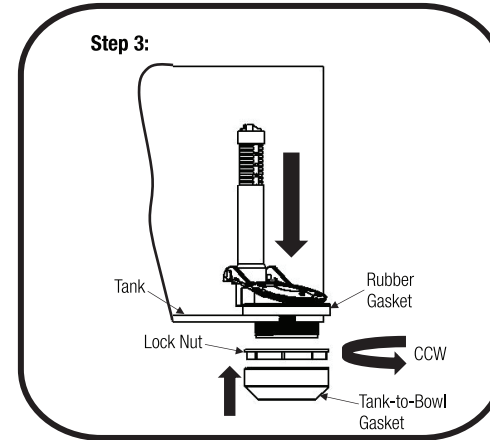
DO NOT USE IN-TANK DROP-IN TOILET BOWL CLEANERS. Use of such products will **RESULT IN DAMAGE** to tank components and **MAY CAUSE FLOODING and PROPERTY DAMAGE and VOID WARRANTY.** **DO NOT** overtighten nut or tank/bowl may crack. Inspect unit every 6 months and replace if there are any signs of cracking, deterioration, or wear and tear.



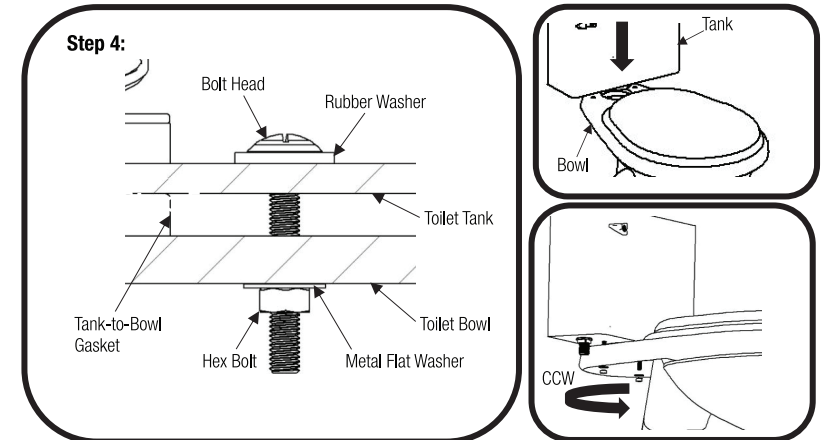
Prepare Tank: Shut water supply valve off by turning valve clockwise, flush toilet to empty tank. Remove any excess water left in tank with sponge or towel. Disconnect water supply line coupling nut from bottom tank of Fill Valve by turning coupling nut clockwise. Place bucket under tank to catch residual water.



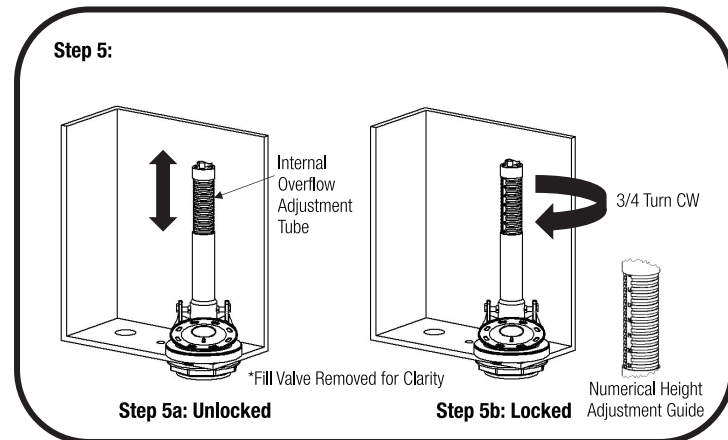
Remove Old Flush Valve: Unhook flapper chain from tank lever. (Use Adjustable Pliers) Unbolt tank from toilet bowl, lift tank and lay on its side on a safe and secure surface. Remove all bolts, hex nuts, metal flat washers, and rubber washers (not shown). Remove Tank-to-Bowl-Gasket from under tank. (Use Adjustable Pliers) on Lock Nut turning clockwise for removal and remove old Flush Valve from tank.
Attention: If Tank-to-Bowl-Gasket shows signs of wear or deterioration, obtain and install a new gasket before installing new Adjustable Flush Valve.



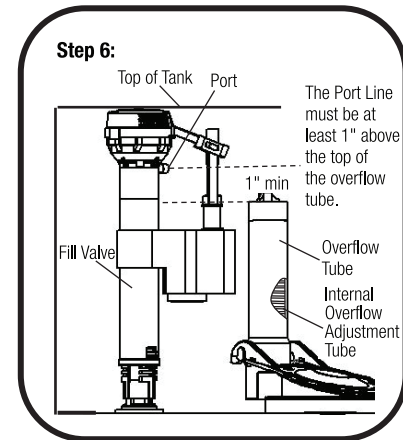
Install Adjustable Flush Valve: Insert new Adjustable Flush Valve into tank hole. Position overflow tube toward back of tank (Do not cover bolt holes of tank). Holding Adjustable Flush Valve in place, hand tighten Lock Nut counter-clockwise and check for leaks. If leaking is detected, hand tighten additional 1/4 turn. **Do not overtighten or tank may crack resulting in leakage and/or flooding.** Place Tank-to-Bowl-Gasket on bottom of Lock Nut. Bowl Gasket should cover Lock Nut.



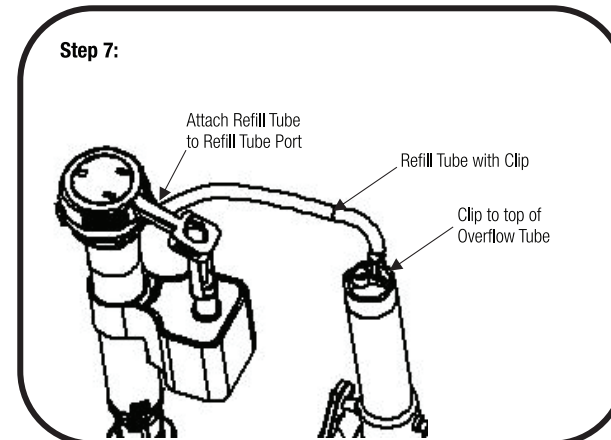
Installing Toilet Bolts: Place one rubber washer on each tank bolt. Place bolts inside tank through bottom holes of tank. Set tank onto bowl. Place metal washers and hex nuts on each bolt underneath toilet bowl. Hand-tighten hex nuts counter-clockwise evenly until tank is snug and does not rock. **Do not overtighten or tank may crack resulting in flooding.**



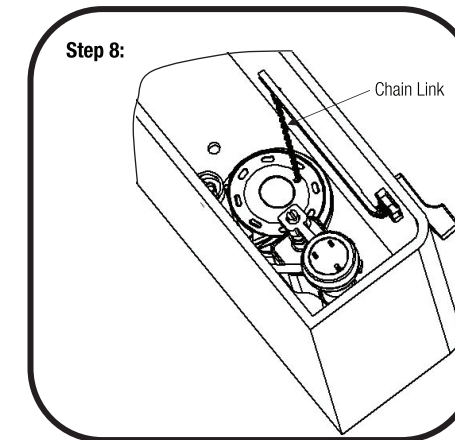
Preparing Adjustable Flush Valve: (Step 5a) Pull internal overflow adjustment tube upward or push downward using numerical height adjustment guide at 3/8" increment markings for height adjustment provided it's no higher than the 1" distance between Port Line and top of Overflow Tube. (See STEP 6). (Step 5b) Turn internal tube full 3/4" clockwise to lock in place as shown.



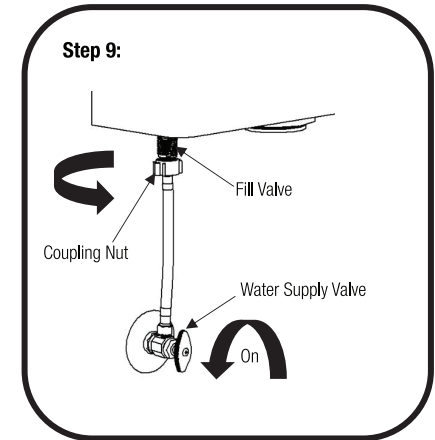
Adjust Adjustable Flush Valve: The height adjustment should be no higher than the 1" distance between Port Line and top of Overflow Tube. Once the Internal Overflow Adjustment Tube is set, Turn internal tube 3/4-turn clockwise to lock in place.



Reattach Refill Tube: To reattach Refill Tube attach one end of refill tube to Tube Port. Attach other end with Clip to top of Overflow Tube.
Warning: Do not insert refill tubing down Overflow Pipe may cause significant water waste.



Attaching Flapper Chain: Attach chain link to lever handle bar directly above the flapper. Leave 1/2 inch of slack in the chain.



Attach Water Supply Connector: Attach water supply coupling nut to fill valve. Turn counter-clockwise by hand until tight. **Warning: Overtightening the nut could damage fill valve or coupling nut that may result in the nut cracking resulting in leakage and/or flooding.** To check for leaks, turn on water supply valve. Should leaking occur-turn coupling nut enough to stop leaking. Flush toilet to check. **DO NOT USE PLUMBER'S PUTTY TO SEAL FITTINGS.**