



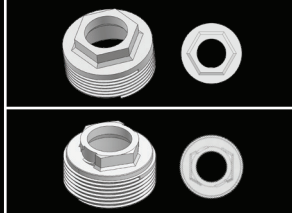
INSTALLATION INSTRUCTIONS FOR 12104

(Moen® Duralast faucets / OEM# 1255)

ATTENTION: Before replacing cartridge, identify cartridge nut.

- DO NOT DISCARD old cartridge nut if faucet has a brass cartridge. Reuse for reassembly.
- If old cartridge nut is plastic then replace with a new cartridge nut.

When reassembling, reverse steps. Cartridge nut to be tightened by hand until snug, then turn an extra 90° (1/4 turn) with crescent wrench.



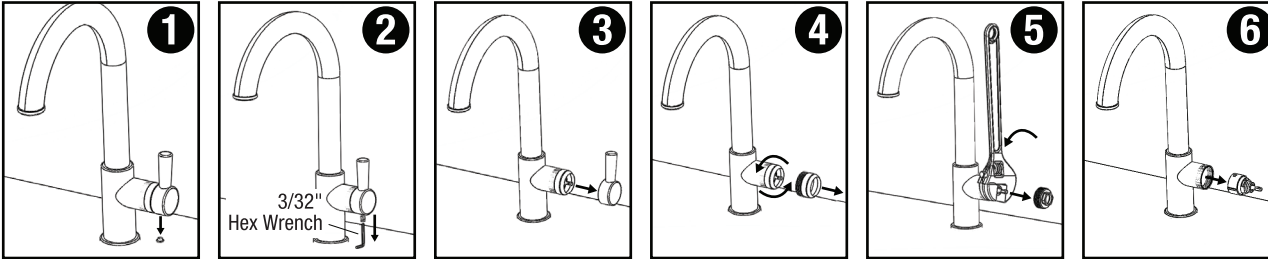
TOOLS NEEDED:



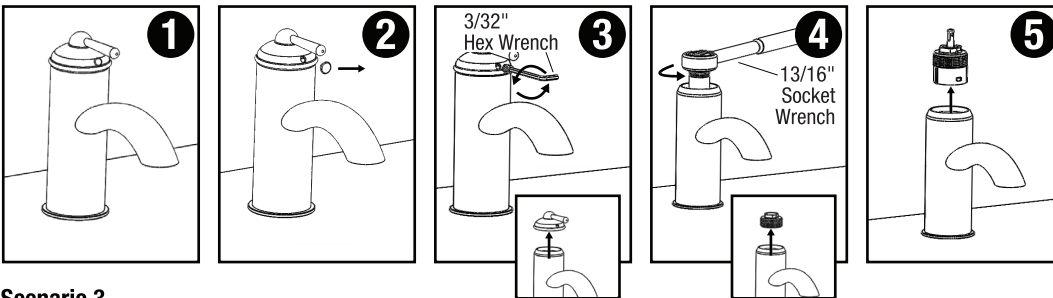
IMPORTANT: Shut off water supply to faucet. This may require shutting off the main water supply to the house. Once the water supply is shut off, turn on the faucet to relieve pressure.

CARTRIDGE REMOVAL

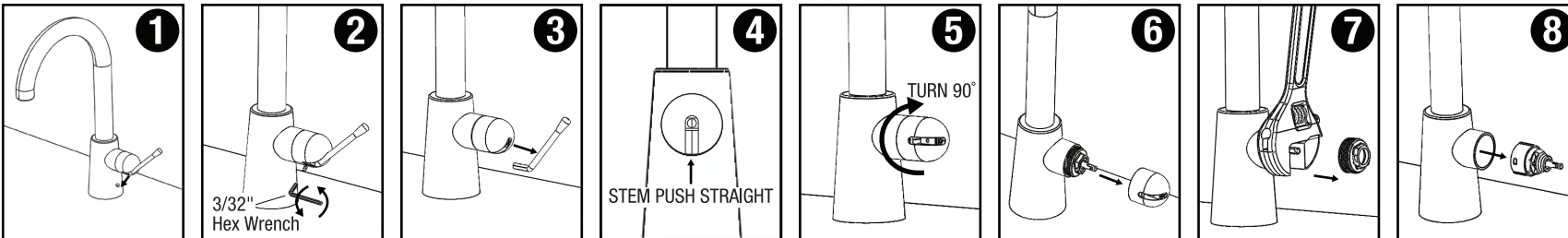
Scenario 1



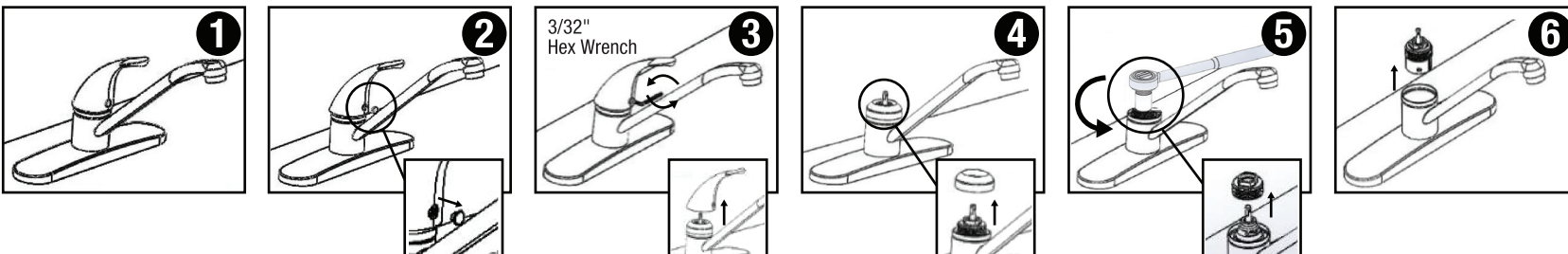
Scenario 2



Scenario 3

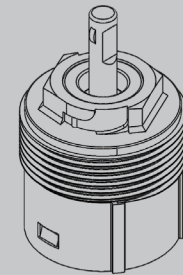
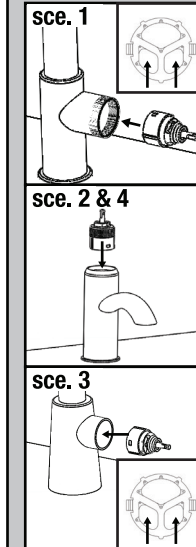


Scenario 4



CARTRIDGE INSTALLATION

Cartridge Alignment Guide



1 - Handle Cartridge Replacement

Contact Danco Support

(Irving, TX USA)
1-800-523-5135
Mon-Fri 7AM to 5PM (CST)

Email Customer Support:
Danco.cs@nch.com

Email Technical Support:
Danco.Support@nch.com